

CHARCOLITE®

BLONDE SYSTEM



difiaba

SERVICE MANUAL

CHARCOLITE®

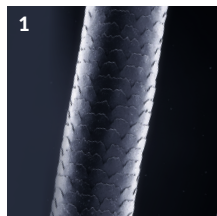
1	How to safely achieve cool blondes?	04
2	What is the Charcolite technology?	04
3	How does it work?	05
4	Product range	06
5	Paste or Powder?	07
6	Cool Toning Lightening Paste	08
	- Application	09
7	Platinum Pigmented Powder Lightener	10
	- Application	11
8	Gloss Toner for Blondes	12
9	Cool Toning Anti-brass Shampoo & Conditioner	14



HOW TO SAFELY ACHIEVE COOL BLONDES?

We all know that blond hair is more delicate. In 90% of cases, the hair has been bleached, dehydrated, and thin, toning differences can generate important changes.

A cool-toned blonde is even more difficult to achieve and in most cases requires a stronger lifting action to eliminate yellow reflections.



1
Hair detail at microscope
BEFORE bleached



2
Hair detail at microscope
AFTER bleached



CHARCOLITE'S INNOVATIVE TECHNOLOGY

Allows achieving COOL-TONED lifting while preserving the structure of even the most fragile and dehydrated hair.

WHAT IS THE CHARCOLITE TECHNOLOGY?

ACTIVATED CHARCOAL POWDER

Removes impurities and build-up in the hair to prepare hair strands for optimal lightening.

Powerful GRAPHITE GRAY PIGMENTS

Progressively tone the hair's underlying pigments to produce a new cool undertone. On levels 8 to 10

RESTORATIVE BONDPLEX

Is an exclusive blend of precious naturally derived oils that repair fragile hair bonds and re-hydrate to optimal levels necessary for healthy and shiny blonde hair.



RESTORATIVE BONDPLEX ACTION

Thanks to our **Restorative BondPlex**, hair is instantly strengthened & restored.

HOW DOES IT WORK?

TRADITIONAL LIGHTENER



CHARCOLITE LIGHTENER



The Lifting & toning stages

PRODUCT RANGE



COOL TONING LIGHTENING PASTE

500g

Pigmented paste lightener:
The anti-brass formula eliminates
yellow and brassy tones for cool
blonde results.

Recommended for: On Scalp and fragile
sensitive hair



PLATINUM PIGMENTED POWDER LIGHTENER

500g

Pigmented powder lightener.
The anti-brass formula eliminates
yellow and brassy tones for platinum
blonde results.

Recommended for: Off Scalp and higher
lift action



GLOSS TONER FOR BLONDES

Tube: 90ml / Activator: 1000ml

Gloss-Enhancing, healthy toners
made just for blondes



COOL TONING ANTI-BRASS SHAMPOO & CONDITIONER

250ml / 600ml

Neutralizing care regimens
for all hair type.

PASTE OR POWDER?

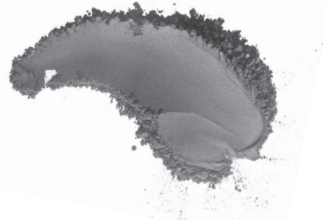


Lighten & tone with our charcolite lighteners.
Getting a bright, cool-toned finish doesn't need to be a hassle.



LIGHTENER PASTE

- Lifts up to 9 levels
- On & off scalp applications
- Rich in oils to protect fragile hair and soothe scalp
- BondPlex bond builder protects the hair for minimized hair breakage



LIGHTENER POWDER

- Lifts to 10 levels and beyond
- Off scalp applications only
- Provides more rapid lifting results
- Less pigment
- BondPlex bond builder protects the hair for minimized hair breakage



Charcolite is designed to achieve COOL BLONDE results. On levels 8 and 9 Charcolite produces a more neutral tone, for Cool Platinum Blonde, hair must be lifted to level 10

COOL TONING LIGHTENING PASTE



Graphite Pigmented paste lightener for cool-toned blonding service and ideal for all bases.
Suitable for freehand, full-head, foil technique, and corrective services.

- Shifts warm to cool tone direction
- Lifts up to 9 levels
- Leaves a shiny, luster finish
- Ultra-smooth consistency
- No Drip, No Swelling, or Bleeding
- ON & OFF scalp applications
- Suitable for all hair bases
- BondPlex bond builder protects the hair for minimized hair breakage

USES



- Any kind of lightening technique, on scalp up to 30 vol.
- Full head highlights
- Color correction
- Free-hand painting and balayage

MIXING



IMPORTANT: knead before opening the pouch.

- Mix in 1 to 2 proportion, for every ounce of paste add 2 ounces of Difiaba cream developer from 5 to 40 volumes.
- Mix properly, the mixture must have a uniform grey color, without dots.



IMPORTANT: Charcolite already contains BondPlex, we do not recommend to add any other bon builder additive, may impair the lifting capabilities.

APPLICATION



- Apply to dry hair, do not shampoo before
- Apply the mixture immediately after preparation
- **IMPORTANT:** Fully saturate the hair surface to ensure the best possible lightening result.

PROCESSING



- Process time will vary depending on the level of lift and condition of the hair.
- Level of lift increases as we increase the processing time, up to 60 minutes. If after 45 minutes extra lift is needed, then prepare a fresh mixture and proceed, without rinsing to a second application, process additional 15-20 minutes. To be able to visually check the level of lift, we recommend cleaning a hair swatch using a dry towel.



IMPORTANT: CHARCOLITE works best at body temperature 95-105F (36-40 C), so while for application close to the scalp no extra heat is needed, whenever used far from the scalp we recommend mild heat source to keep the hair at body temperature. Do not exceed 105F (40C). Additionally, for FREE HAND PAINTING and BALAYAGE techniques, we recommend a higher volume developer and ambient/room temperatures to be NO LOWER THAN 72F (22C) for accurate lift.

RINSE



After processing is complete, rinse thoroughly and until the water runs clear, then wash with Charcolite cool toning shampoo and apply Charcolite cool toning conditioner.

DEVELOPER SELECTION BASED ON HAIR TEXTURE

Diameter of each individual strand. Fine, Medium, Coarse

Hair Texture	Developer Strength	Timing
fine	20 vol / 6%	50-60 min
medium	30 vol / 9%	50-60 min
coarse	40 vol / 12%	50-60 min

APPLICATION

Hair evaluation is one of the most essential parts of the blonde service.

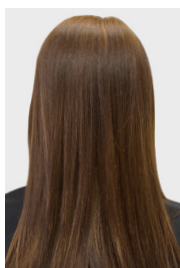
NEED TO DETERMINE:

- ① Hair resistance
- ② Level of lift
- ③ Tonality



***Always perform a strand test before any lightening service.**

① APPLICATIONS



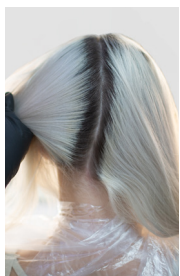
VIRGIN APPLICATIONS

- Mix 1 part paste lightener with 2 parts Cream Developer (1:2 ratio)
- Apply from about 1/2 inch from the scalp to mid shafts and ends, wait 15 minutes then apply on the base close to the scalp.
- Apply in fine sections using a generous quantity.
- Process for up to 60 minutes. Visually check during processing time.
- If a 2nd application is needed proceed as previously explained.
- Rinse thoroughly and until the water runs clear, then cleanse with Charcolite Shampoo and follow with Charcolite cool toning conditioner.



COLORED HAIR

We recommend test on a hair strand to determine developer and processing time. The application is similar to virgin hair application, bear in mind that the non-colored hair close to the scalp will lift quicker compared to the rest of the hair, adjust processing time accordingly and inspect the results frequently. Usually, due to the coloring pigment in the hair, the results might be warmer/darker than natural hair application, in this case proceed with a fresh mixture and a new application; always check hair conditions before proceeding.



TOUCH-UP ON PRE-LIGHTENED HAIR

- Mix 1 part paste lightener with 2 parts Cream Developer from 10 to 30 vol (1:2 ratio)
- Apply into the base area
- Process for 30-45 minutes. Visually check during processing time.
- To even tonality, prepare a mix in a 1 to 3 proportion of Charcolite Paste and developer 5 to 10 vol depending on the required level of lift, then apply mid-shafts and ends.
- Process for 15 to 20 min and visually check during processing time.
- Rinse.

② HOW TO CHECK ON PROCESSING

Choose a small section of hair and remove the product by running a dry towel down the strands or wiping using a dry cotton.



IMPORTANT - GRAY/BLUE HUE: Charcolite graphite pigment is formulated to neutralize brassy tones on levels 9 to 10; in case you go higher you may notice some gray/blue hue, most of the time once dry will disappear and leave beautiful ice blondes; in case you want to remove just shampoo few times.

PLATINUM PIGMENTED POWDER LIGHTENER

Graphite Pigmented powder lightener for cool-toned blonding service and ideal for all bases. Suitable for freehand, foil technique, and corrective services.

- Shifts warm to cool tone direction
- Lifts to 10 levels and beyond
- Leaves a shiny, luster finish
- Perfect stability and consistency
- No Drip, No Swelling, or Bleeding
- OFF scalp applications only
- Suitable for all hair bases
- BondPlex bond builder protects the hair for minimized hair breakage



USES

- Any kind of lightening technique
- Full head highlights
- Color correction
- Free-Hand painting and balayage



MIXING

- Mix 1 to 2 proportion, for every ounce of powder add 2 ounces of Difiaba cream developer from 5 to 40 volumes.
- Mix properly, the mixture must have a uniform grey color.



IMPORTANT: Charcolite contains BondPlex, we do not recommend adding any other bond builder additive, this may impair the lifting capabilities.



APPLICATION

- Apply to dry hair.
- Apply the mixture immediately after preparation

IMPORTANT: Fully saturate the hair surface to ensure the best possible lightening result.



PROCESSING

- Process time will vary depending on the level of lift.
- Level of lift increases as we increase the processing time, up to 45 minutes. If after 30 minutes extra lift is needed, then prepare a fresh mixture and proceed, without rinsing to a second application, process additional 15-20 minutes. To be able to visually check the level of lift, we recommend cleaning a hair swatch using a dry towel.



IMPORTANT: Charcolite Platinum Powder work best at body temperature 95-105 F° (36-40C) Heat is not always needed, however when used far from the scalp we recommend using a mild heat source to keep the hair at body temperature. Do not exceed 105F° (40C) Additionally, for FREE HAND PAINTING and BALAYAGE techniques, we recommend a higher volume developer and ambient/room temperatures to be NO LOWER THAN 72F (22C) for accurate lift.



RINSE

After processing is complete, rinse thoroughly and until the water runs clear, then wash with Charcolite cool toning shampoo and apply Charcolite cool toning conditioner.

DEVELOPER SELECTION BASED ON HAIR TEXTURE

Diameter of each individual strand. Fine, Medium, Coarse

Hair Texture	Developer Strength	Timing
fine	20 vol / 6%	45-60 min
medium	30 vol / 9%	45-60 min
coarse	40 vol / 12%	45-60 min

APPLICATION

Hair evaluation is one of the most essential parts of the blonde service.

NEED TO DETERMINE:

1
Hair resistance

2
Level of lift

3
Tonality



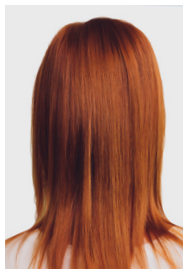
***Always perform a strand test before any lightening service.**

1 APPLICATIONS



VIRGIN APPLICATIONS

- Mix 1 part powder lightener with 2 parts Cream Developer (1:2 ratio)
- Apply from about 1/2 inch from the scalp to mid shafts and ends, wait 15 minutes then apply on the base close to the scalp.
- Apply in fine sections using a generous quantity.
- Process for up to 45 minutes. Visually check during processing time. If a 2nd application is needed proceed as previously explained.
- Rinse thoroughly and until the water runs clear, then cleanse with Charcolite Shampoo and follow with Charcolite cool toning conditioner.



COLORED HAIR

We recommend test on a hair strand to determine developer and processing time. The application is similar to virgin hair application, bear in mind that the non-colored hair close to the scalp will lift quicker and more compared to the rest of the hair, adjust processing time accordingly and inspect the results frequently. Usually, due to the coloring pigment in the hair, the results might be warmer/darker than natural hair application, in this case proceed with a fresh mixture and a new application; always check hair conditions before proceeding.

2 HOW TO CHECK ON PROCESSING

Choose a small section of hair and remove the product by running a dry towel down the strands or wiping using a dry cotton.



IMPORTANT - GRAY/BLUE HUE: Charcolite graphite pigment is formulated to neutralize brassy tones on levels 9 to 10; in case you go higher you may notice some gray/blue hue, most of the time once dry will disappear and leave beautiful ice blondes; in case you want to remove just shampoo few times.

CHARCOLITE[®]

GLOSS TONER FOR BLONDES

The challenge with traditional toners

Blondes often face uneven toning, dryness, and damage after using traditional liquid toners. These toners can be: harsh, leaving hair porous, brittle, prone to fading

What Blondes (and Stylists) Need

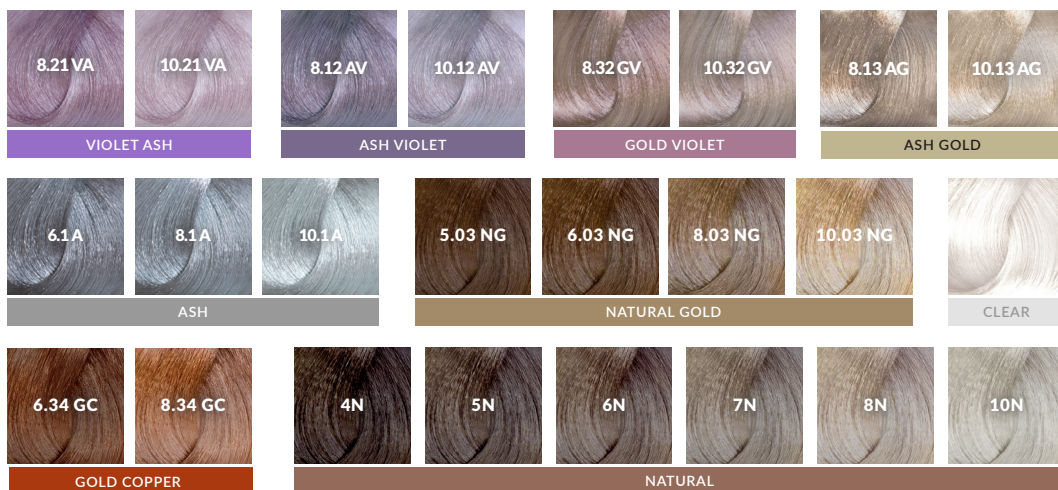
A gentle solution that provides true-to-tone results without compromising hair integrity.



THE SOLUTION

Introducing Charcolite Gloss Toner for Blondes,
a **ZERO-LIFT** CREAM-BASED TONER designed exclusively for
fragile, lightened hair. Unlike traditional liquid toners,
Charcolite offers superior conditioning leaving hair **SOFT, SHINY AND VIBRANT**.
Flawless, **true-to-tone results**

- **Intermixable Shades:** Customize and create endless blonde tones with perfectly blendable formulas.
- **Zero Lift:** No unnecessary lightening, just perfect, even toning.
- **Cream-Based Formula:** For brush, bowl, or bottle application, enhancing softness & shine.
- **pH-Balanced & Bond-Building:** Seals cuticles, strengthens hair, prevents damage.
- **Ultra-Low Developer** (2.5 Volume, <1%): Safe for porous hair while maintaining strength & softness.
- **Hyaluronic Acid Infusion:** Deep hydration for smooth, elastic, breakage-resistant hair.



INSTRUCTIONS:

MIXING / APPLICATION / PROCESSING:

A) Toning (Full Head): Mix Toner + Activator in 1:2 ratio. Apply root to ends, saturate thoroughly. Process 5 min for flash tone or up to 25 min for full intensity.

B) Root Shadow: Mix Toner + Activator in 1:1 ratio. Apply to roots, process 15–20 min. Follow with melting or toning mids and ends.

RINSE & SHAMPOO:

Rinse hair with lukewarm water and follow with Difiaba color-specific shampoo.



VEGAN



CRUELTY
FREE



PG-FREE



PARABEN
FREE



SILICONE
FREE



Pro Tips for fully Customizable Results:

Charcolite Gloss Toners come in Levels 8, 10 and Clear*.

To create level 9, simply mix equal parts 8 and 10 then add Gloss Toner activator in a 1:2 ratio

*Clear is an unpigmented shade that can be used alone with Gloss Toner Activator to add incredible shine or with mix any other shade to dilute the color intensity



COOL TONING ANTI-BRASS

An innovative Hair Care Duo for post-lightening eliminates brassiness and maintains cool tones in all shades of blonde. Enriched with wheat germ and avocado oil to recondition the hair protect the color and seal the cuticles improving hair's brightness, color, and cuticle shine.



STEP ① PRE-TONING

COOL TONING ANTI-BRASS SHAMPOO

with **Restorative BondPlex** - pH 4

Specifically designed to be used following a bleaching service and at-home maintenance, this effectively removes all residue from the hair and scalp, stops the oxidation process and extends the life of hair color. This gentle pH balancing shampoo eliminates yellow and brassy tones from NATURAL or chemically treated blonde shades, contains natural graphite pigments that work to deliver a perfect healthy blonde tone. Activated Charcoal purifies the hair and scalp by eliminating impurities, leaving a shiny and shimmering hair surface to reflect light and add shine.



STEP ② TONING

COOL TONING ANTI-BRASS CONDITIONER

with **Restorative BondPlex** - pH 3

This highly effective post bleaching Conditioner controls yellow and brassy tones in all blonde shades. Charcolite Cool Toning Anti-Brass Conditioner contains natural graphite pigments that treat to deliver or progressively tone to the perfect healthy blonde.

Whether your blonde is natural, highlighted, balayage, or highly processed, you can choose your level of cool. Restorative BondPlex is an exclusive blend of precious naturally-derived oils that repair fragile hair bonds and re-hydrate to optimal levels necessary for healthy and shiny blonde hair.

Thanks to our Restorative BondPlex, hair is instantly strengthened and restored. Apply to wet hair and leave on for 10 minutes then rinse. Processing time can be increased by up to 20 minutes. The longer you leave it on the cooler tone you will obtain. **Use once a week for maintenance, twice a week for gentle toning, or up to 3 times a week for optimal cool toning results.**



SERVICE POST-LIGHTENING



AT-HOME MAINTENANCE



INSTRUCTION

- 1 SHAMPOO WITH COOL TONING ANTI-BRASS SHAMPOO
- 2 RINSE
- 3 APPLY CHARCOLITE COOL TONING ANTI-BRASS CONDITIONER
- 4 LEAVE IN FOR 10 MINUTES OR MORE THEN RINSE
- 5 PROCESSING TIME CAN BE INCREASED UP TO 20 MINUTES FOR MAXIMUM TONING
- 6 RINSE



VEGAN



CRUELTY
FREE



PG-FREE



PARABEN
FREE



SILICONE
FREE



SULFATE
FREE



IMPORTANT

It is the conditioner that deposits the most pigment, make sure to leave on long enough to achieve maximum toning.

difiaba

www.difiaba.com

