



beauty star[®]

beautiful_young_glamour

bella_giovane_glamour



beauty star®

Design Collections

GoldArtCollection by <i>Christophe Pillet</i>	6
CubeCollection by <i>Platform and Beauty Star Design Division</i>	20
ModoCollection by <i>Platform</i>	28
DsplayCollection by <i>Platform</i>	44
JamesCollection by <i>Angelo Dall'Aglio e Angelo Natuzzi</i>	54

Chich Collections

BrilliantStyle Styling units - <i>Mensole</i>	64
EleganceStyle Working chairs - <i>Poltrone lavoro</i>	94
GlamourStyle Waiting chairs - <i>Poltrone attesa</i>	114
KonkaStyle Wash units - <i>Lavaggi</i>	120
StoneStyle Reception desks - <i>Mobili reception</i>	152
Furnishing Furnishing - <i>Mobili</i>	162
FruitStyle Accessories and stools - <i>Accessori e sgabelli</i>	174
Dryers Dryers - <i>Elettrici</i>	182

Salon Concepts

Salone Alkimia <i>Cuorné (TO)</i>	192
Salone Haniel <i>Via della Spiga - Milano</i>	194
Salone Karisma <i>Lodi (MI)</i>	196
Salone Alberto e Giusy <i>Sergnano (CR)</i>	198
Salone Gate <i>Reggio Emilia</i>	200
Salone Loft <i>Treviso</i>	202
Salone Fodras <i>Santa Croce sull'Arno (PI)</i>	204



GoldArtCollection

by Christophe Pillet



CubeCollection

by Platform and Beauty Star Design Division



ModoCollection

by Platform



DsplayCollection

by Platform



JamesCollection

by Angelo Dall'Aglio e Angelo Natuzzi

6

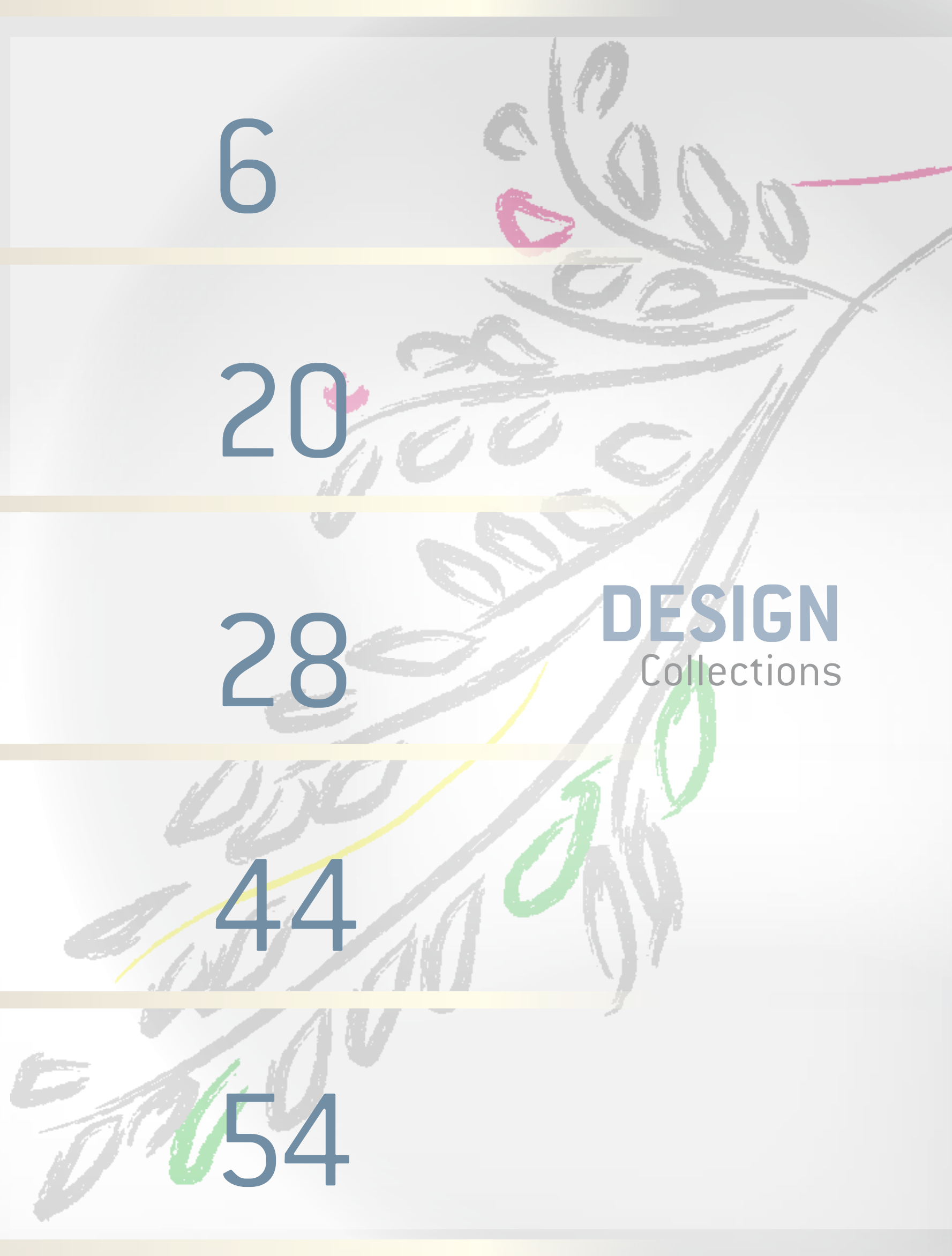
20

28

44

54

DESIGN
Collections



ART
D
D



working chair - smile chair - poltrona lavoro
styling unit - smile soul parete - mensola
wash unit - pillet wash - lavaggio
stool - down town - sgabello
trolley - GA trolley - carrello
cabin - GA base - mobile di servizio
back wash unit - retro light - mobile retro lavaggio



color
colore
skay brown - marrone



tiles
pavimenti-rivestimenti
iris porcelainwood brown





GoldArtCollection

by Christophe Pillet



beauty star



- grey veneered frame
- single mirror for wall mirror
- top of polished aluminium
- c/w power socket to be wired on site

Smile Soul Wall

- *struttura nobilitato grigio*
- *specchio intero singolo per versione a parete*
- *piano alluminio lucido*
- *compreso di presa a parete da cablare in loco*



85 185 38 40 0,45





- grey veneered frame
- polished chrome-plated footrest
- double mirror
- top of polished aluminium c/w power socket to be wired on site

Smile Soul Centrale

- struttura nobilitato grigio
- appoggiatesta cromato lucido
- specchio intero doppio
- piano alluminio lucido
compreso di presa a parete da cablare in loco



92 200 60 85 1,3







- frame polyurethane foam
- cover skay

Smile Chair

- struttura poliuretano espanso
- rivestimento skay





ART
ART
ART



OO
OO



- 2/4 seaters sofa
- covers skay-microfibre
- feet grey metal
- inner frame wood and foam

Cube

- divano 2/4 posti
- rivestimento skay-microfibra
- piedi metallo grigio
- struttura interna legno e spugna

↔	↑	↗	kg	m ³
120	42	64	14	0,32

↔	↑	↗	kg	m ³
240	42	64	25	0,62





- stool with soft sit
- chromium plated aluminium base

Down Town

- sgabello con seduta morbida
- base in alluminio cromato

60	48	60	45	10	0,21
	min	max			



- internal frame of painted metal
- external casing of white painted ABS
- pivoting basin of white ceramic

Pillet Wash

- *struttura interna in metallo verniciato*
- *carteratura esterna in ABS verniciato bianco*
- *codetta basculante in ceramica bianca*







- o cabinet with glass wash basin
- o mixer with shower
- o covered with tempered crystal
- o 3 drawers with blum-motion guides
- o chromium plated steel base

GA Sink

- o mobiletto con lavabo in vetro
- o miscelatore con doccia
- o rivestito con cristallo serigrafato temperato
- o completo di 3 cassetti con guide blum-motion
- o base cromata lucida



80 123 50 116 1,38



- o cabinet covered with tempered crystal
- o 6 drawers with blum-motion guides
- o chromium plated steel base

GA Base

- o mobiletto rivestito con cristallo serigrafato temperato
- o completo di 6 cassetti con guide blum-motion
- o base cromata lucida



80 77 50 108 1,38



- o cabinet on wheels
- o covered with tempered crystal
- o 3 drawers with blum-motion guides
- o chromium plated steel base

GA Trolley

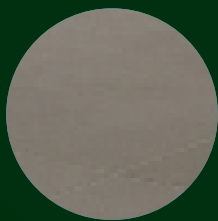
- o mobiletto con ruote
- o rivestimento in cristallo serigrafato temperato
- o completo di 3 cassetti con guide blum-motion
- o base cromata lucida



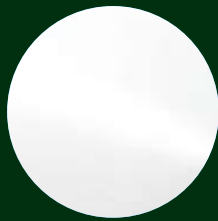
50 87 40 69 0,31







tiles
pavimenti-rivestimenti
iris architect hangar



colors - colori
skay white - bianco



colors - colori
skay black - nero





working chair - **cubik** - *poltrona lavoro*
wash unit - **cube wash** - *lavaggio*
styling unit - **black butterfly** - *mensola*
cabin - **mobiletto wengé** - *mobile di servizio*
service cabin - **beauty top** - *mobile di servizio*
service cabin - **beauty base** - *mobile di servizio*
panel - **claire** - *pannello*

CubeCollection

by Platform and Beauty Star Design Division

 **beauty star**[®]



- o 1 place styling unit
- o shaped mirror
- o color: black

Black Butterfly

design by Beauty Star Design Division

- o specchiera ad un posto
- o vetro sagomato
- o colore: nero







- structure of foamed polyurethane
- covering skay

Cubik

design by Beauty Star Design Division

- struttura in poliuretano flessibile
- rivestimento skay

68	50	62	62	22	0,32	
min		max				







- one-place wash unit
- structure of black laminated wood
- white ceramic basin
- skay cover
- backwash chair with electrical height adjustment

Cube Wash

design by Robert Thompson for Platform

- lavaggio ad 1 posto
- struttura in laminato nero
- codetta in ceramica bianca
- rivestimento in skay
- seduta lavaggio con regolazione altezza elettrico







working chair - amica - poltrona lavoro
wash unit - modo wash - lavaggio
styling unit - modo light - mensola
styling unit - modo wengé - mensola
cabin - mobiletto wengé - mobile di servizio
light box - large modo - pannello luminoso
display unit - small modo - espositore



colors - colori
skay white - bianco
skay black - nero



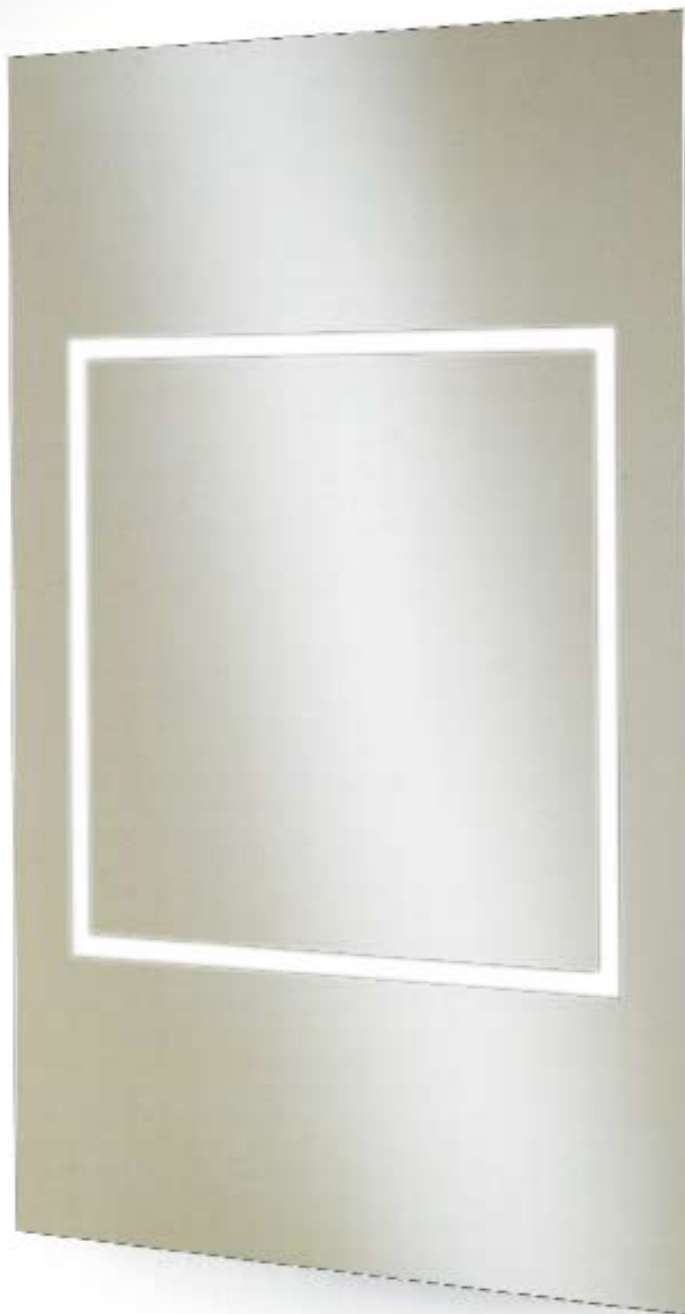
tiles
pavimenti-rivestimenti
iris brilliant grey





ModoCollection
by Platform

 **beauty star**[®]



- frame of painted metal
- mirror with sandblasted frame
- seat for neon-light

Modo Light

- *struttura metallo verniciato*
- *specchio riquadro sabbato*
- *predisposizione per alloggiamento neon*



80 125 10 21 0,11



- chrome-plated metal frame

Modo Footrest

- *struttura metallo cromato*



35 18 6 2 0,005







- laminated frame in a wengé finish
- footrest included
- upper full mirror
- inner laminated top for accessories

Modo Wengé

- *struttura in laminato wengé*
- *appoggiatesta incluso*
- *specchio superiore intero*
- *piano accessori interno in laminato*

→ ↑ ↗ 🛒 m²
90 200 25 35 0,40



modo

modo



working chair - **modo** - poltrona lavoro
styling unit - **modo light** - mensola
display unit - **small modo** - espositore
footrest - **modo footrest** - appoggiapiedi
cabin - **mobiletto wengé** - mobile di servizio
back wash unit - **retro light** - mobile retrolavaggio



modo



- swivel working chair
- frame of wood and foam
- frame and chrome-plated armrests
- skay cover

Modo Chair

- poltrona girevole
- telaio in legno e spugna flessibile
- struttura + braccioli in metallo cromato
- rivestimento skay

60 48 60 64 25 0,32





modo

working chair - **amica** - poltrona lavoro
wash unit - **modo wash** - lavaggio
styling unit - **modo light** - mensola
light box - **large modo** - pannello luminoso
display unit - **small modo** - espositore
footrest - **modo footrest** - appoggiatesta
cabin - **mobiletto wengé** - mobile di servizio
panel - **caroline** - pannello





- frame anodized aluminium
- armrests chrome aluminium
- base anodized aluminium
- pivoting white basin
- outer cover skay

Modo Wash

- struttura alluminio anodizzato
- braccioli alluminio cromato
- base alluminio anodizzato
- codetta bianca basculante
- rivestimento skay



65 93 106 110 45 1,10



- frame grey metal
- option backlight

Small Modo

- struttura metallo grey
- variante illuminazione retro



- grey metal frame
- white plexiglass panel
- 2 glass shelves

Large Modo Display

- struttura metallo grey
- pannello in plexiglass
- 2 ripiani in cristallo



- frame grey metal
- option backlight

Large Modo

- struttura metallo grey
- variante illuminazione retro





80 80 45 38 0,16



80 80 45 41 0,16



160 80 45 79 0,32

- lower cabinet glazed white with extra-white silk screened doors framed in aluminium internal accessories to store towels and a two compartment recycling basket
- top illuminated extra-white painted glass with polished stainless steel basin and mixer taps
- structure of upper cabinet glass with backlighting, framed in aluminium with extra-white shelves

Retro Lavaggio Light

design by Beauty Star Design Division

- mobile inferiore nobilitato bianco con ante in vetro extrawhite serigrafato bianco coprente e profili in alluminio accessorizzato con raccogli biancheria e doppio cestino raccolta differenziata
- top vetro extrawhite verniciato, illuminato, con lavello inox lucido e miscelatore
- struttura mobile superiore vetro retroilluminato, con profili alluminio e ripiani in vetro extrawhite





working chair - amica - poltrona lavoro
 display - dsplay - espositore
 styling unit - revolving dsplay - mensola
 trolley - trolley dsplay - carrello
 footrest - footrest dsplay - appoggiapiedi
 panel - geneviève - pannello



tiles
 pavimenti-rivestimenti
 iris brilliant grey



lights
 lampade
 targetti



colors - colori
 skay white - bianco
 skay black - nero



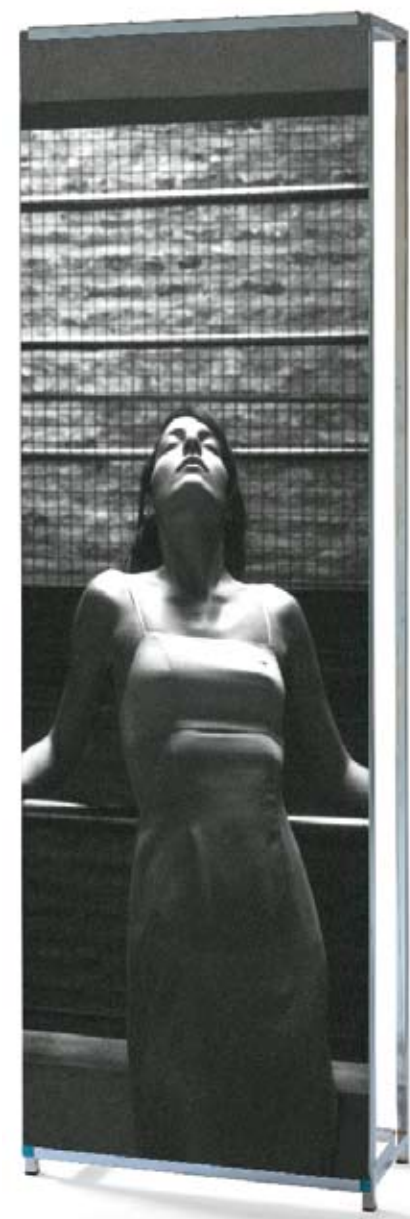


DsplayCollection

by Platform

 **beauty star**[®]

display



- styling unit chrome-plated metal with full mirror

Styling Unit Display

- posto lavoro in metallo cromato con specchio intero

60	221	25	45	0,35

- double styling unit chrome-plated metal
- with full mirror including n.2 mirrors

Revolving Display

- posto di lavoro girevole in metallo cromato
- con specchio intero completo di due specchi

60	240	6	26	0,09

- panel for serigraphy or image printed on forex

Display Poster Holder

- pannello per serigrafia o porta immagine in forex

60	218	0,5	3	0,008



display



Dsplay Collection by Platform

- o armchair with black squared base
- o skay covering black and hydraulic pump
- o frame wood and sponge

Amica

- o poltrona base qua/block nero
- o colore skay nero con pompa idraulica
- o struttura in legno e spugna

→	↑	↑	↘	kg	m ³
60	48	60	55	18	0,21
min		max			



- waiting chair
- structure padded metal frame
- covering skay - microfibre

Waiting Chair Amica

- poltrona attesa
- struttura telaio imbottito
- rivestimento skay - microfibra



65 102 45 60 0,65



- 2 places waiting chair
- padded metal frame
- skay - microfibre cover

Sofà Amica

- poltrona attesa 2 posti
- struttura telaio imbottito
- rivestimento skay - microfibra



130 102 45 60 0,65



- chrome-plated metal display including glass shelves

Single Display Dsplay

- espositore in ferro cromato completo di ripiani in vetro



- frame metal

Footrest Dsplay

- struttura in metallo



- laminated box in a wengé finish with top or bottom drawer
- laminated box in an English oak finish with vertical grain
- white plexiglass box
- box of transparent glass

Cubo Box Dsplay

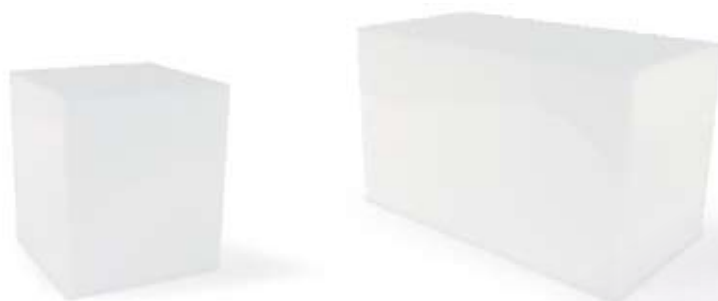
- cubo box in laminato wengé con cassetto superiore o inferiore
- cubo box in laminato rovere venato verticale
- cubo box plexiglass bianco
- cubo box in vetro trasparente



- chrome-plated metal display including glass shelves

Display Dsplay

- espositore in ferro cromato completo di ripiani in vetro



- white plexiglass luminous box 25 lighting not including
- white plexiglass luminous box 51 lighting not including

Cubo Box Luminoso Dsplay

- cubo box 25 light in plexiglass bianco illuminazione esclusa
- cubo box 51 light in plexiglass bianco illuminazione esclusa





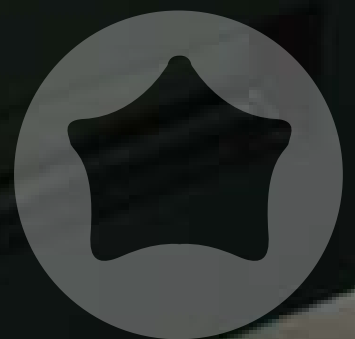
- o chrome-plated including crystal shelves and steel top
- o wheels and hairdryer holder
- o cubic boxes not included

Trolley Dsplay

- o *carrello in ferro cromato completo di piani in cristallo e top in acciaio*
- o *completo di ruote e porta phon*
- o *cubi box esclusi*

30 82 25 8 0,061





James



working chair - james chair - *poltrona lavoro*
styling unit - james mirror - *mensola*
reception desk - james desk - *mobile reception*



color
colore
skay whyte - bianco





JamesCollection

by Angelo Dall'Aglio e Angelo Natuzzi

 **beauty star®**

James



- frame of chrome-plate metal
- face of black "d.bood" and steel in a satin finish
- glued mirror
- c/w foot-rest and hair-dryer holder

James Mirror

- struttura in metallo cromato
- frontale in d.bood colore nero e acciaio satinato
- specchio incollato
- appoggiapiede e portaphon inclusi

120 180 25 23 0,80





James

James Collection by Angelo Dall'Aglio e Angelo Natuzzi



- swivel working chair
- frame of wood and foam
- armrests of aluminium
- skay cover

James Chair

- poltrona girevole
- struttura in legno + schiumato
- braccioli in alluminio
- rivestimento skay

→	↑	↑	↘	kg	m ³
55	52	64	60	15	0,32
	min	max			





- reception desk
- veneered structure in a grey, black, wengé finish
- front central panel of black rolled metal-steel or of black laminated wood-steel
- frame of chrome-plated metal

James Desk

- mobile reception
- struttura nobilitato grey, nero, wengè
- frontale centrale laminato nero, acciaio, legno
- telaio in metallo cromato

120 110 51 95 1,20





BrilliantStyle

Styling units - *Mensole*



EleganceStyle

Working chairs - *Poltrone lavoro*



GlamourStyle

Waiting chairs - *Poltrone attesa*



KonkaStyle

Wash units - *Lavaggi*



StoneStyle

Reception desks - *Mobili reception*



Furnishing

Furnishing - *Mobili*



FruitStyle

Accessories and stools - *Accessori e sgabelli*



Dryers

Dryers - *Elettrici*

64

94

114

120

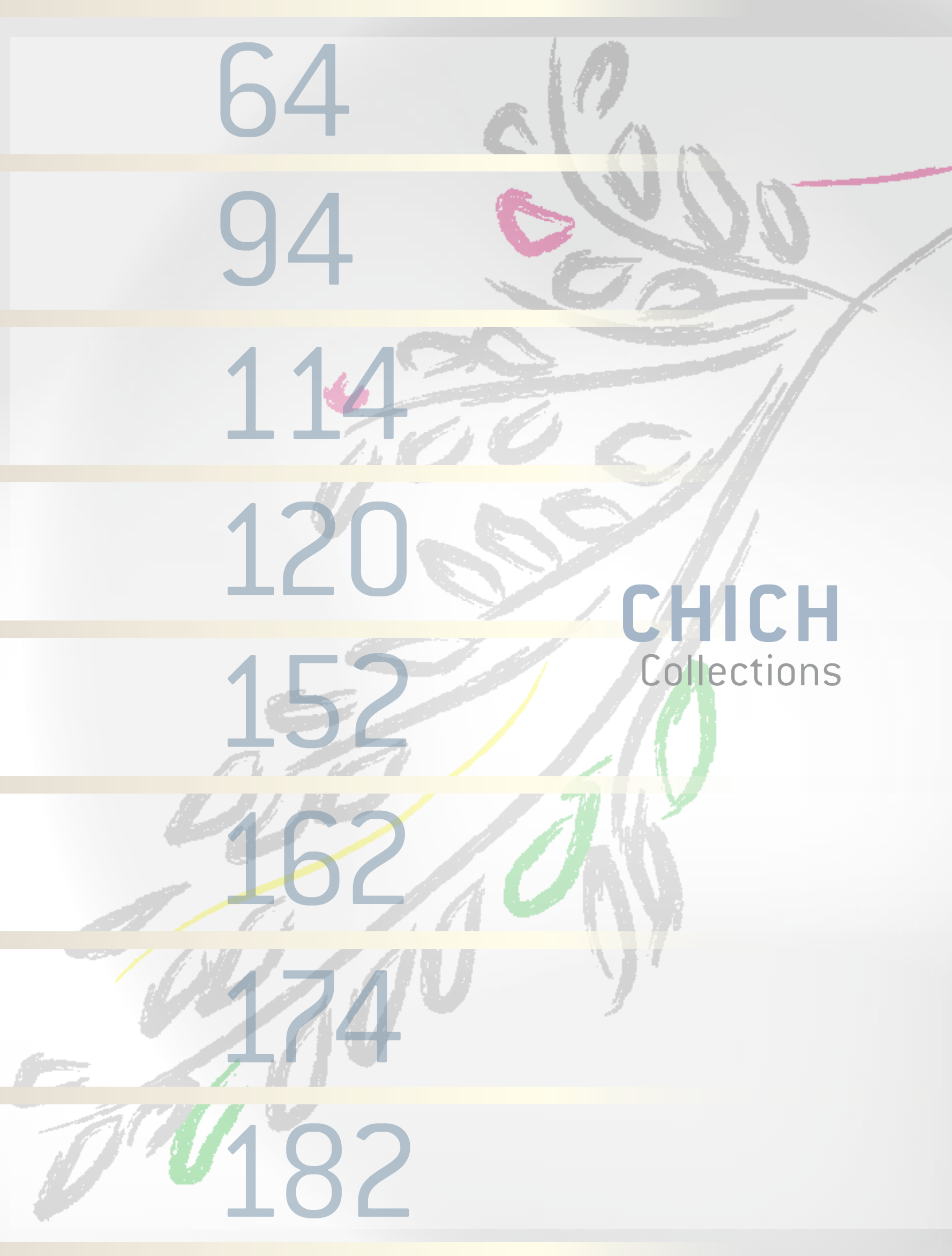
152

162

174

182

CHICH
Collections



STUDIO STYLING



styling unit - **butterfly** - mensola
working chair - **kirk** - poltrona lavoro
wash unit - **picard massage** - lavaggio
waiting chair - **baba** - poltrona attesa
footrest - **cigno** - appoggiapiedi
panel - **alice** - pannello



tiles
pavimenti-rivestimenti
iris brilliant white



colors - colori
skay white - bianco
skay black - nero





BrilliantStyle
Styling units - *Mensole*

 **beauty star**[®]

- 1 place styling unit
- silvered glass

Butterfly

- specchiera ad un posto
- vetro argentato sagomato



- polished aluminium footrest

Cigno

- appoggiapiedi in alluminio lucidato







- 1 place styling unit
- shaped mirror
- color: white

White Butterfly

- *specchiera ad un posto*
- *vetro sagomato*
- *colore: bianco*



70 170 11 30 1





- rear structure of aluminium
- full mirror with hot curved part

Bend Mirror

- *struttura retro in alluminio*
- *specchio intero con parte curvata a caldo*



70 147 15 18 0,15



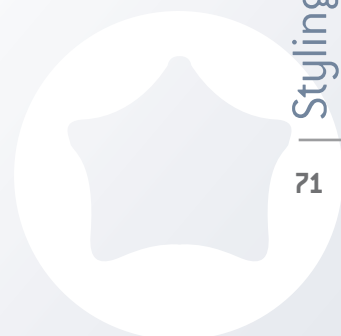
- 1 place styling unit
- shaped mirror, with sandblasted sides

Spring

- *specchiera ad un posto*
- *vetro sagomato con fasce laterali sabbiate*



80 175 15 28 1,20





- o 1 place styling unit
- o white metal frame
- o polished chrome-plated footrest
- o mirror with sandblasted frame with rounded aluminium shelf or square aluminium shelf

Chic

- o *specchiera ad un posto*
- o *struttura metallo bianco*
- o *appoggiatesta cromato lucido*
- o *specchio fascia sabbata variante piano alluminio stonato o piano alluminio squadrato*



75 200 36 32 0,3



- 1 place styling unit
- frame painted metal
- mirror with sandblasted frame
- top polished aluminium
- accessories backligh

Cool

- *specchiera ad un posto*
- *struttura metallo verniciato*
- *specchio fascia sabbata*
- *piano alluminio lucido*
- *accessori retro illuminazione*

85 190 30 37 0,48

Styling units

Styling units - Mensole



wash unit - aluwash kinda - lavaggio
working chair - uhura - poltrona
waiting chair - baba - poltrona attesa
styling unit - cool - mensola
back wash unit - retro light - mobile retro lavaggio
cabin - mobiletto wengé - mobile di servizio
panel - geneviève - pannello





- 1 place styling unit
- structure ground and engraved glass with glued mirror
- silver glass

Eagle Silver

- *specchiera ad un posto*
- *struttura vetro smerigliato e inciso con specchio incollato*
- *vetro argento*



- 1 place styling unit
- structure ground and engraved glass with glued mirror
- ethnic glass

Eagle Gold

- *specchiera ad un posto*
- *struttura vetro smerigliato e inciso con specchio incollato*
- *vetro etnico*







- specchiera ad 1 posto
- struttura di sostegno in metallo
- specchio con fascia a rilascio luce
- piano in alluminio lucido

Lightin

- one-place styling unit
- supporting frame of metal
- mirror with lighted band
- top of polished aluminium



- 1 place styling unit
- painted metal structure
- mirror with sandblasted frame
- rounded or square shelf of polished aluminium

Lightin Eco

- specchiera ad un posto
- struttura metallo verniciato
- specchio fascia sabbata
- piano alluminio lucidato stonato\quadrato







- o 1 place styling unit
- o frame black Plexiglas
- o mirror full mirror
- o footrest not included

Mirror Black

- o *specchiera ad un posto*
- o *struttura plex nero*
- o *specchio intero*
- o *appoggiapiedi escluso*



90 180 15 15 0,22



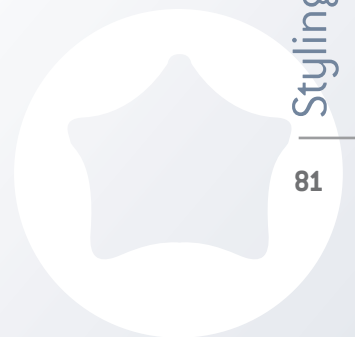


- one-place styling unit
- full mirror
- hand-made lateral decoration

Multicolor

- *specchiera ad 1 posto*
- *specchio intero*
- *decorazione laterale fatta a mano*

→ ↑ ↗ ↘ ↙ ↚
80 140 5 15 0,30





- o one-place styling unit
- o frame of chrome-plated metal
- o top of chrome-plated aluminium
- o drawers in a red, grey and white finish
- o glued mirror, foot-rest not included

Profi Short Crom

design by Profilodesign

- o specchiera corta ad 1 posto
- o struttura in metallo cromato
- o piano in alluminio cromato
- o cassetti portaoggetti colore rosso, grigio, bianco
- o specchio incollato, appoggiatesta escluso

80 130 32 22 0,80



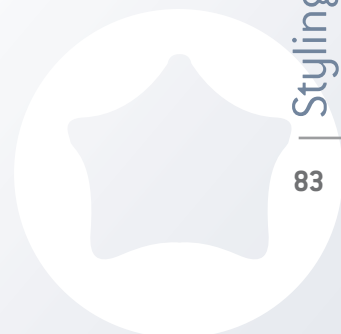


- one-place styling unit
- mirror upper structure painted
- in metal grey
- mirror fixed with plates
- veneered bottom top in a wengé finish with removable drawer

Profi Short Painted

- *specchiera corta ad 1 posto*
- *struttura superiore specchio verniciato*
- *grigio metallizzato*
- *specchio fissato con piastre*
- *piano inferiore in nobilitato wengé con cassetto estraibile*

80 130 20 28 0,20





o wood box



- o 1 place styling unit
- o frame metal
- o mirror full mirror
- o top 2-support glass
- o footrest not included

Beer

- o *specchiera ad un posto*
- o *struttura metallo*
- o *specchio intero*
- o *piano in vetro con due supporti*
- o *appoggiapiede escluso*





- 1 place styling unit
- structure wood back panel
- mirror squared with sanded finishes
- polished aluminium shelf

Billy

- *specchiera ad un posto*
- *struttura retro pannello in legno*
- *specchio squadrato con finiture sabbiate*
- *piano alluminio lucido*



○ wood box





- 1 place styling unit
- structure laminated wood
- variants oval aluminium shelf, rectangular aluminium shelf

Dakar

- *specchiera ad un posto*
- *struttura legno laminato*
- *variante piano alluminio stondato, piano alluminio squadrato*



85 150 25 26 0,3



- 1 place styling unit
- steel frame in a satin finish
- square mirror with sandblasted finish
- with rounded aluminium shelf or square aluminium shelf

Kapital

- *specchiera ad un posto*
- *struttura acciaio satinato*
- *specchio squadrato con finiture sabbiate*
- *piano alluminio stondato o piano alluminio squadrato*



85 196 32 28 0,35

- 1 place styling unit
- structure white painted metal
- mirror shaped with sanded finished
- accessoires back lighting system

Lucky

- *specchiera ad un posto*
- *struttura metallo verniciato bianco*
- *specchio sagomato con finiture sabbiate*
- *accessori retro illuminazione*

76,5 180 32,5 35 0,47



- 1 place styling unit
- grey veneered structure
- mirror with sandblasted frame
- shelf of polished aluminium with rounded or square edge

Lucky Eco

- *specchiera ad un posto*
- *struttura in nobilitato grigio*
- *specchio fascia sabbata*
- *piano alluminio lucidato stonato\squadrato*

76,5 180 22 27 0,41



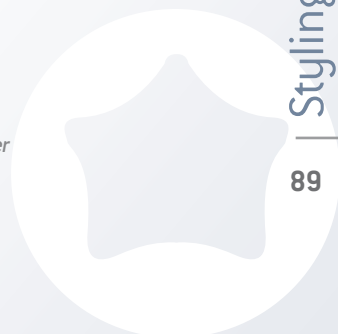
- 1 place styling unit
- structure silver painted metal
- footrest chromed metal
- shelf polished aluminium

Montecarlo

- *specchiera ad un posto*
- *struttura metallo verniciato silver*
- *appoggiatesta metallo cromato*
- *piano alluminio lucidato*



97 210 27,5 28 0,3





- 1 place styling unit
- structure silver painted metal
- mirror squared with sanded finished
- footrest chromed metal
- glued mirror, footrest included, glass top shelf

Sax

- *specchiera ad un posto*
- *struttura metallo verniciato silver*
- *specchio squadrato con finiture sabbiate*
- *appoggiapiedi metallo cromato*
- *finiture portaphon estraibile*
- *piano superiore in vetro*



70 210,5 37,5 28 0,3



- 1 place styling unit
- structure silver painted metal
- mirror squared with sanded finished
- footrest chromed metal
- finishing hand-dryer holder
- accessoires back lighting system

Vintage Wall

- specchiera ad un posto
- struttura metallo verniciato silver
- specchio squadrato con finiture sabbiate
- appoggiapiedi metallo cromato
- finiture portaphon estraibile
- accessori retro illuminazione



90 210,5 37,5 28 0,30



- 2 places styling unit
- silver painted metal frame
- double square mirror with sandblasted finish
- footrest of chrome-plated metal
- hand-dryer holder
- accessoires back lighting system

Vintage Centrale

- specchiera a 2 posti
- struttura metallo verniciato silver
- doppio specchio squadrato con finiture sabbiate
- appoggiapiedi metallo cromato
- finiture portaphon estraibile
- accessori retro illuminazione



90 210,5 60 42 0,8



- 1 place styling unit
- frame bent glass
- mirror glued mirror
- footrest bent glass
- top not included

Zenith

- *specchiera ad un posto*
- *struttura vetro curvato*
- *specchio incollato*
- *appoggiatesta vetro curvato*
- *piano escluso*



80 200 30 42 0,51





- table mirror
- structure wood back panel + polished aluminium

Summit Mirror

- specchio da tavolo
- retro pannello in legno + alluminio lucidato



- 4 places technical table
- structure painted metal + polished aluminium
- footrest chromed aluminium
- accessories polished aluminium dryer-holder
- shelf transparent glass of strong thickness with sanded finishes

Summit

- tavolo tecnico centrale 4 posti
- struttura metallo verniciato silver + alluminio lucidato
- appoggiatesta in metallo cromato
- portaphon in alluminio lucidato
- piano vetro trasparente di forte spessore con finiture sabbiate



- table mirror
- curved glass with glued mirror

Vogue Mirror

- specchio da tavolo
- struttura vetro curvato con specchio incollato



- technical table
- structure curved glass side panels and laminated wenge top
- finishing hand-dryer holder

Vogue

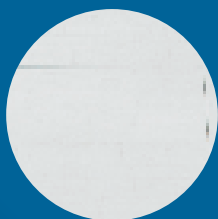
- tavolo tecnico
- struttura fianchi in vetro curvato e piano in laminato wengé
- appoggiatesta in alluminio cromato



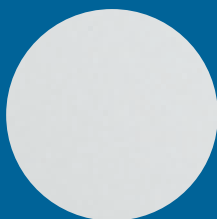
working chairs



working chair - **charme** - poltrona lavoro
wash unit - **look massage** - lavaggio
styling unit - **zenith** - mensola
reception desk - **dream** - mobile reception
panel - **sylvie** - pannello



tiles
pavimenti-rivestimenti
iris brilliant white



color - colore
skay white - bianco





EleganceStyle

Working chairs - *Poltrone lavoro*

 **beauty star**



- swivel working chair
- structure of wood and flexible foam
- frame of polished chrome-plated metal with hair-dryer holder
- covering skay

Bend design by Platform

- poltrona girevole
- struttura legno+schiumato flessibile
- telaio cromato lucido con portaphon
- braccioli cromati, rivestimento skay

→	↑	↑	↑	↘	Ⓜ
61	48	60	63	22	0,32
	min		max		





- structure of foamed polyurethane
- aluminium armrests
- covering skay

Bianka

- *struttura in poliuretano flessibile*
- *braccioli alluminio*
- *rivestimento skay*





- structure of foamed polyurethane
- covering skay

Comfort

- *struttura in poliuretano flessibile*
- *rivestimento skay*

62	48	60	56	11	0,32
	min	max			



- revolving chair
- structure metal
- armrests polished aluminium
- covering skay

Venezia Bicolor

- poltrona girevole
- struttura metallo
- braccioli alluminio lucidato
- rivestimento skay

62	48	60	62	10
min max				0,32



- revolving chair
- frame polyurethane
- armrests polished aluminium
- covering skay

Kirk design by Angelo Dall'Aglio e Angelo Natuzzi

- poltrona girevole
- struttura poliuretano espanso
- braccioli alluminio lucidaa
- rivestimento skay

60	50	62	65	14	0,32
min		max			



- revolving chair
- armrests polished aluminium
- frame polyurethane foam
- covering skay

Uhura design by Angelo Dall'Aglio e Angelo Natuzzi

- poltrona girevole
- braccioli alluminio lucido
- struttura poliuretano espanso
- rivestimento skay

65	52	64	65	14	0,24
min	max				



- revolving chair
- chrome-plated metal structure
- armrests chrome-plated metal
- covering skay

Anais

- poltrona girevole
- struttura telaio metallo cromato
- braccioli metallo cromato
- rivestimento skay

→ ↑ ↑ ↘ ↙ ↻ m³
55 50 62 56 10 0,32
min max



- revolving chair
- frame of wood + foam
- covering skay

Charme

- poltrona girevole
- struttura legno + schiumato
- rivestimento skay





- revolving chair
- frame wood + flexible foam
- armrests skay
- covering skay

Charme Reclinabile

- poltrona girevole
- struttura legno + schiumato flessibile
- braccioli skay
- rivestimento skay

65	52	64	60	10	0,32
min		max			



- revolving chair
- armrests polished aluminium
- structure metal plus flexible foamed
- covering skay

Kaury

- poltrona girevole
- braccioli alluminio lucidato
- struttura metallo imbottito più schiumato flessibile
- rivestimento skay

62	58	64	65	8	0,32
min		max			



- revolving chair
- structure metal plus flexible
- armrests polished aluminium
- covering skay

Kinda

- poltrona girevole
- struttura metallo + schiumato flessibile
- braccioli alluminio lucidato
- rivestimento skay

58	48	60	55	10,1	0,32	
min	max					



- revolving chair
- structure metal plus flexible
- armrests polished aluminium
- covering skay

Miss

- poltrona girevole
- struttura metallo + schiumato flessibile
- braccioli alluminio lucidato
- rivestimento skay

60	50	62	65	9,6	0,32	m ²
min		max				



- swivel working chair
- frame of metal and wood coated with flexible foam
- retractable foot-rest
- height adjustable head-rest
- skay cover

Rumba *design by Angelo Dall'Aglio e Angelo Natuzzi*

- poltrona girevole
- struttura in metallo e legno rivestito in schiumato flessibile
- appoggiatesta regolabile in altezza
- appoggiapiede a scomparsa
- rivestimento skay

→	↑	↑	↘	kg	m ³
75	50	66	70	25	0,45
	min	max			



- revolving chair
- frame rigid polyurethane
- only black

Spock design by Angelo Dall'Aglio e Angelo Natuzzi

- poltrona girevole
- struttura poliuretano rigido
- disponibile solo in nero

68	45	58	60	15	0,35
min		max			



- revolving chair
- structure chromed metal frame + flexible
- armrests polished aluminium
- covering skay

Vega

- poltrona girevole
- struttura telaio metallo cromato + schiumato flessibile
- bracciali alluminio lucidato
- rivestimento skay

62	52	64	60	9,2	0,32	
min		max				



- revolving chair
- structure metal
- armrests grey/black/silver polyurethane
- covering skay

Venezia

- poltrona girevole
- struttura metallo
- braccioli poliuretano grigio/nero/argento
- rivestimento skay

62	48	60	62	10	0,32
min		max			



- tilting and revolving man chair
- base hydraulic
- finishing headrest, footres
- armrests polyurethane
- covering skay

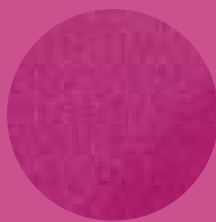
Mister

- poltrona da uomo reclinabile e girevole
- base idraulica
- finiture appoggiatesta, appoggiaipiedi
- braccioli poliuretano
- rivestimento skay

64,5 112 137 48 0,5



working chair - **kinda** - *poltrona lavoro*
wash unit - **aluwash kinda** - *lavaggio*
styling unit - **lucky** - *mensola*
waiting chair - **baba** - *poltrona attesa*
panel - **emma** - *pannello*



tiles
pavimenti-rivestimenti
iris format

colors - *colori*
skay silver - *argento*

colors - *colori*
skay fucsia - *fucsia*





GlamourStyle

Waiting chairs - *Poltrone attesa*

 **beauty star**



- one seater sofa
- inner structure padded wood
- frame silver painted metal
- foot polished aluminium
- covering skay - microfibre

Prince 1 place

- poltrona attesa a un posto
- struttura interna legno imbottito
- telaio metallo verniciato silver
- piedi alluminio lucidato
- rivestimento skay - microfibra



84,5 75,5 67 10 0,45



- 2 seaters sofa
- inner structure padded wood
- frame silver painted metal
- foot polished aluminium
- covering skay - microfibre
- variant 3 seaters

Prince 2 places

- poltrona attesa a 2 posti
- struttura interna legno imbottito
- telaio metallo verniciato silver
- piedi alluminio lucidato
- rivestimento skay - microfibra
- variante 3 posti



147,5 78,5 67 20 0,9



- 2 seaters sofa
- inner structure padded wood
- foot polished aluminium
- covering skay - microfibre
- variant 3 seaterse

Babi

- divano attesa 2 posti
- struttura interna legno imbottito
- piedi alluminio lucidato
- rivestimento skay - microfibra
- variante 3 posti







 122 44 54 20 0,1

- one seater sofa
- inner structure padded wood
- foot chromed abs
- covering skay - microfibre

Baba 1 place

- poltrona attesa a un posto
- struttura interna legno imbottito
- piedi abs cromati
- rivestimento skay - microfibra



- 2 seaters sofa
- inner structure padded wood
- foot chromed abs
- covering skay - microfibre
- variant 3 seaters

Baba 2 places

- poltrona attesa a 2 posti
- struttura interna legno imbottito
- piedi abs cromati
- rivestimento skay - microfibra
- variante 3 posti



- waiting pouff
- covering skay - microfibre

Lupin

- pouff attesa
- rivestimento skay - microfibra



- waiting pouff
- covering skay - microfibre

Dadà

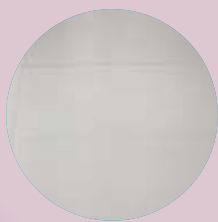
- pouff attesa
- rivestimento skay - microfibra



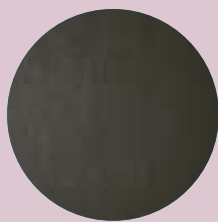




wasn units
sam



tiles
pavimenti-rivestimenti
iris ma.de uni grigio



colors - colori
skay black - nero





working chair - **bend** - *poltrona lavoro*
wash unit - **konka** - *lavaggio*
styling unit - **bend mirror** - *mensola*
stool - **bon bon** - *sgabello*
waiting chairs - **lupin, dada** - *poltrone attesa*
back wash units - **river** - *mobili retro lavaggio*

KonkaStyle

Wash units - *Lavaggi*

 **beauty star**[®]



- single wash unit
- internal frame of galvanised metal
- external structure of foamed polyurethane
- skay cover
- pivoting basin of white ceramic
- manual lift

Konka Eco

- lavaggio a un posto
- struttura interna in metallo zincato
- struttura esterna in poliuretano espanso
- rivestimento in skay
- codetta basculante in ceramica bianca
- alzagambe manuale



- single wash unit
- internal frame of galvanised metal
- external structure of foamed polyurethane
- skay cover
- pivoting basin of white ceramic
- electrical lift

Konka Relax

- lavaggio a un posto
- struttura interna in metallo zincato
- struttura esterna in poliuretano espanso
- rivestimento in skay
- codetta basculante in ceramica bianca
- alzagambe elettrico







- single wash unit
- internal frame of galvanised metal
- external structure of foamed polyurethane
- skay cover
- pivoting basin of white ceramic
- electrical lift and massage with rollers

Konka Massage

- lavaggio a un posto
- struttura interna in metallo zincato
- struttura esterna in poliuretano espanso
- rivestimento in skay
- codetta basculante in ceramica bianca
- alzagambe elettrico e massaggio a rulli



- single wash unit
- internal frame of galvanised metal
- external structure of foamed polyurethane
- skay cover
- pivoting basin of white ceramic
- electrical lift and air massage

Konka Air Massage

- lavaggio a un posto
- struttura interna in metallo zincato
- struttura esterna in poliuretano espanso
- rivestimento in skay
- codetta basculante in ceramica bianca
- alzagambe elettrico e massaggio ad aria





wash units



Wash units - Lavaggi





- single wash unit
- structure anodized protected aluminium sheet
- base polished aluminium
- basin white pivoting

Aluwash Kinda

- *lavaggio a un posto*
- *struttura lamiera alluminio anodizzata protetta*
- *base alluminio lucido presso fuso*
- *codetta basculante bianca*

57	90	104,5	135	46	1,3
min		max			



- frame anodized aluminium
- armrests chrome aluminium
- base anodized aluminium
- pivoting white basin
- outer cover skay

Aluwash Modo

- struttura alluminio anodizzato
- braccioli alluminio cromato
- base alluminio anodizzato
- codetta basculante bianca
- rivestimento skay

65	93	106	130	45	1,10
min		max			



- structure anodized protected aluminium sheet
- base polished aluminium
- basin white pivoting
- outer cover skay

Aluwash Smile

- *struttura lamiera alluminio anodizzata protetta*
- *base alluminio lucido presso fuso*
- *codetta basculante bianca*
- *rivestimento skay*



62 90 104,5 121 49 1,3
min max





- single wash unit
- structure anodized protected aluminium sheet
- base polished aluminium
- basin white pivoting

Aluwash Vega

- *lavaggio a un posto*
- *struttura lamiera alluminio anodizzata protetta*
- *base alluminio lucido presso fuso*
- *codetta basculante bianca*

57 90 104,5 135 49 1,3
min max



- single wash unit
- structure anodized protected
- aluminium sheet
- base polished aluminium
- basin white pivoting

Aluwash Venezia

- lavaggio a un posto
- struttura lamiera alluminio
- anodizzata protetta
- base alluminio lucido presso fuso
- codetta basculante bianca





- single wash unit
- outside structure grey plastic
- inside structure painted metal frame
- basin white pivoting

Logic Vega

- *lavaggio a un posto*
- *carteratura esterna plastica grey goffrata*
- *struttura interna telaio in metallo verniciato*
- *codetta basculante bianca*

62	98	107	125	39,5	1,04
min		max			



- single wash unit
- outside structure grey plastic
- inside structure painted metal frame
- basin white pivoting

Logic Venezia

- lavaggio a un posto
- carteratura esterna plastica grey goffrata
- struttura interna telaio in metallo verniciato
- codetta basculante bianca

60	98	107	120	39,5	1,04
	min	max			





- single wash unit
- outside structure polished protected steel
- inside structure painted metal frame
- basin white pivoting
- with vibromassager and electric leg-lifter

Look Massage

- lavaggio a un posto
- cartteratura esterna acciaio lucido protetto
- struttura interna telaio in metallo verniciato
- codetta basculante bianca
- con vibromassaggiatore e alzagambe elettrico

64 99 107 170 46 1,30
 min max



- single wash unit
- outside structure polished protected steel
- inside structure painted metal frame
- basin white pivoting
- with electric leg-lifter

Look Relax

- lavaggio a un posto
- carteratura esterna acciaio lucido protetto
- struttura interna telaio in metallo verniciato
- codetta basculante bianca
- con alzagambe elettrico

64	99	107	170	46	1,30
	min	max			



- single wash unit
- outside structure polished protected steel
- inside structure painted metal frame
- basin white pivoting

Look Kaury

- lavaggio a un posto
- carteratura esterna acciaio lucido protetto
- struttura interna telaio in metallo verniciato
- codetta basculante bianca

64 99 107 125 46 1,30
min max



- one-place wash unit
- basin structure of polished steel
- white basin
- skay cover
- electric backwash chair and leg-lifter

Mix

- *lavaggio a un posto*
- *struttura codetta in alluminio lucido*
- *codetta bianca*
- *poltrona rivestimento skay*
- *seduta e alzagembe elettrico*



65 106 180 105 1,40

wash units



working chair - **venezia bicolor** - poltrona lavoro
wash units - **satin venezia** - lavaggi
styling units - **eagle** - mensola
waiting chair - **dadà** - poltrona attesa
panel - **lucille** - pannello





- single wash unit
- external protective casing of anodized aluminium
- internal frame of galvanised metal
- white pivoting basin

Satin Venezia

- *lavaggio a un posto*
- *struttura in alluminio anodizzata protetta*
- *struttura interna in telaio metallo zincato*
- *codetta basculante bianca*

60	95	105	130	65	1,30
min		max			



wasn't units



Wash units - Lavaggi

working chair - **kinda** - poltrona lavoro
wash units - **satin kinda** - lavaggi
styling units - **mirror black** - mensola
waiting chair - **dada** - poltrona attesa





- single wash unit
- external protective casing of anodized aluminium
- internal frame of galvanised metal
- white pivoting basin

Satin Kinda

- *lavaggio a un posto*
- *struttura in alluminio anodizzata protetta*
- *struttura interna in telaio metallo zincato*
- *codetta basculante bianca*

57	95	105	130	65	1,30
min		max			





- single wash unit
- armsets polished aluminium
- frame anodized aluminium
- base anodized aluminium
- basin white
- outer cover skay
- with vibromassager and electric leg-lifter

Picard Massage *design by ADD*

- lavaggio a un posto
- braccioli alluminio lucidato
- struttura alluminio anodizzato
- base alluminio anodizzato
- codetta bianca
- rivestimento esterno skay
- con vibromassaggiatore e alzagambe elettrico





- single wash unit
- structure anodized
- protected aluminium sheet
- base polished aluminium
- basin white pivoting

Vip Kaury

- lavaggio a un posto
- struttura lamiera alluminio
- anodizzata protetta
- base alluminio lucido presso fuso
- codetta basculante bianca

70	99	110	120	90	1,03
min		max			



- single wash unit
- structure aluminium
- armrest aluminium
- basin white pivoting
- with vibromassager and electric leg-lifter

Vip Massage

- lavaggio a un posto
- struttura lamiera alluminio anodizzata protetta
- braccioli alluminio
- codetta basculante bianca
- con vibromassaggiatore e alzagambe elettrico

70	99	110	170	90	1,03
min		max			



- single wash unit
- structure aluminium
- armrests aluminium
- basin white pivoting
- with electric leg-lifter

Vip Relax

- lavaggio ad un posto
- struttura lamiera alluminio anodizzato protetta
- braccioli alluminio
- codetta basculante bianca
- con alzagambe elettrico

70	99	110	170	85	1,03	
	min	max				

reception desks



reception desk - **nancy desk** - cassa
working chair - **spock** - poltrona lavoro
wash unit - **picard massage** - lavaggio
styling unit - **chic** - mensola
cabin - **mobleto wengé** - mobile di servizio
panel - **charlotte** - pannello



tiles
pavimenti-rivestimenti
iris brilliant white



colors - colori
skay black - nero





StoneStyle

Reception desks - *Mobili reception*

 **beauty star**[®]



- reception desk
- white veneered frame
- white veneered desk
- laminated top in wengé/black/white
- front glass panel with backlight

Nancy Desk

- mobile reception
- struttura nobilitato bianco
- piano nobilitato bianco
- ponte sopra laminato wengé/nero/bianco
- frontale vetro retroilluminato







- reception desk
- frame black covered
- black veneered counter top
- black veneered storage unit under desk
- flank maple wood

Anais Desk

- mobile reception
- struttura mobile nobilitato nero
- pianetto nobilitato nero
- mobile interno nobilitato nero
- fianco legno acero





- reception desk
- front laminated panel in a wengé finish
- structure in a white laminated finish
- with rolled steel frame
- double counter top of etched glass

Cuoio Wengé

- mobile reception
- frontale rivestimento in laminato wengé
- finiture struttura in laminato bianco
- con cornice in laminato acciaio
- pianetto doppio piano in vetro acidato



145 120 70 145 1,21





- reception desk
- white veneered frame
- white veneered desk
- counter top of rolled metal
- front panel of rolled metal

Dream Desk

- mobile reception
- struttura nobilitato bianco
- piano nobilitato bianco
- pianetto laminato metallo
- frontale laminato metallo



- reception desk
- black veneered frame
- counter top of etched glass
- black veneered storage unit under desk
- front silver laminated panel - silver checkered
- black veneered desk

Jane Desk

- mobile reception
- struttura mobile in nobilitato nero
- pianetto vetro acidato
- mobile interno nobilitato nero
- frontale laminato argento - quadr. argento
- piano nobilitato nero





- mobile reception
- grey veneered internal frame
- black veneered desk
- chrome-plated PVC feet
- counter top of etched glass
- front laminated panel in a wengé or metal finish

Gilda Desk

- reception desk
- struttura interna nobilitato grey
- piano nobilitato nero
- piedi in PVC cromato
- pianetto vetro acidato
- frontale laminato wengé o metallo

80 110 50 21 0,36



- reception desk
- veneered structure in white finish
- sand blasted frontal glass panel with backlight
- top in laminated wood in a grey, black, white, wengé finish
- counter-top of clear glass

Lightin Desk

- mobile reception
- struttura in nobilitato bianco
- frontale in vetro sabbiato con illuminazione
- top in lam. grigio, nero, bianco, wengé
- doppio piano in vetro trasparente

140 110 75 130 1,40





- reception desk
- supporting feet of polished aluminium
- front panel of white plexiglass
- grey - maple desk
- grey wooden box with lockable drawer and door

Lucky Desk

- mobile reception
- piede di sostegno alluminio lucidato
- frontale plexiglass opale bianco
- piano legno acero - grey
- mobiletto legno grey fornito di cassetto con chiave e anta



120 102 46 80 1,5



- reception desk
- supporting foot of silver painted metal
- desk and front panel of Baviera walnut
- grey wooden box with lockable drawer and door

Wall Street

- mobile reception
- piede di sostegno metallo verniciato silver
- piano e frontale legno noce baviera
- mobiletto legno grey fornito di cassetto con chiave e anta



120 105 59,5 42 0,65



- reception desk
- supporting foot of silver painted metal
- grey desk
- grey wooden box with lockable drawer and door

Euro Grey

- mobile reception
- piede di sostegno metallo verniciato silver
- piano grey
- mobiletto grey fornito di cassetto con chiave e anta

120 82 45 32 0,21



- reception desk
- supporting foot of silver painted metal
- front panel of silver painted metal
- desk of Baviera walnut
- grey wooden box with lockable drawer and door

Star Silver

- mobile reception
- piede di sostegno metallo verniciato silver
- frontale metallo verniciato silver
- piano legno noce baviera
- mobiletto legno grey fornito di cassetto con chiave e anta

100 102 43 60 0,65





- shelf
- laminated display in a wengé/white finish
- c/w internal glass shelf and backlighting
- wall-mounting

Expo River

- *pendente*
- *mobile espositore in laminato wengé, bianco*
- *con piano vetro interno e illuminazione*
- *retrofissaggio a parete*



40 110 30 15 0,30



- back wash unit
- laminated structure in a wengé finish
- veneered drawer in a wengé finish with front frame of aluminium and glass, painted in red and white
- version with drawers, doors, basin and water mixing tap

Retro Lavaggio River

- *mobile retrolavaggio*
- *struttura in laminato wengé, bianco*
- *cassetto in nobilitato wengé con frontale in telaio alluminio e vetro verniciato colore rosso e bianco*
- *versione con cassette, ante, lavandino e miscelatore*



144 80 40 45 1,80







- hanging small unit, white laminated opaque finish, with 4 crystal small shelves
- optional: lighting system of cabinet

Beauty Column

- mobiletto pensile in laminato bianco finitura opaco, completo di 4 pianetti in cristallo
- optional: sistema di illuminazione del mobile



30 180 22 15 0,3



- hanging small unit white laminated opaque finish
- tempered extra clear crystal top, engraved
- optional: lighting system of cabinet

Beauty Base

- mobiletto pensile in laminato bianco finitura opaca
- piano in cristallo temperato extrachiario serigrafato
- optional: sistema di illuminazione del mobile



80 55 37 15 0,2

- enhancing small unit, white laminated opaque finish, door with footlights, with 1 crystal top
- optional: lighting system of cabinet

Beauty Top

- mobiletto pensile in laminato bianco finitura opaco, anta con ribalta completo di 1 piano in cristallo
- optional: sistema di illuminazione del mobile



80 45 22 10 0,2



- hanging cabinet with white laminated opaque finish round wash basin
- tempered extra clear crystal top, engraved
- optional: lighting system of cabinet

Beauty Sink

- mobiletto pensile con lavabo tondo in laminato bianco finitura opaca
- piano in cristallo temperato extrachiario serigrafato
- optional: sistema di illuminazione del mobile



80 55 37 20 0,2



- display unit with 4 curved glass shelves
- structure silver warnished wooden base
- finishing central spotlight

Empire

- espositore con 4 piani in vetro curvo
- struttura basamento in legno verniciato silver
- finiture faretto centrale per illuminazione





- service cabinet
- grey laminated structure
- glass drawer and door with laminated insert in a wengé finish

Ambra

- mobiletto di servizio
- struttura laminato grey
- finiture anta cassetto vetro con inserto in laminato wengé



- service cabinet
- structure laminated wengé in light wood
- finishing removable drawer

Zaffiro

- mobile di servizio
- struttura laminato wengé acero
- finiture cassetto estraibile



- service cabinet
- laminated structure in wengé maple - white - grey - black finish
- removable drawer and castors

Perla

- mobiletto di servizio
- struttura in laminato wengé acero - bianco - grigio - nero
- finiture cassetto estraibile e ruote



- service cabinet
- laminated wengé in light wood - white - grey
- 2 removable drawers

mobiletto Wengé

- mobile di servizio
- laminato wengé acero - bianco - grigio
- 2 cassetti estraibili



- service cabinet
- laminated frame in grey - white - black finish
- laminated doors in grey - white - black finish

Diamante

- mobile di servizio
- struttura laminato grigio - bianco - nero
- ante laminato grigio - bianco - nero



- service cabinet
- laminated frame in grey - white - black finish
- grey laminated door or Bavaria walnut door
- glass shelves

Smeraldo

- mobile di servizio
- struttura laminato grigio - bianco - nero
- ante laminato grigio o noce baviera
- ripiani in cristallo





- service cabinet
- laminated frame in grey - white - black finish
- laminated doors in grey - white - black finish

Topazio

- *mobile di servizio*
- *struttura laminato grigio - bianco - nero*
- *pianetti laminati grigio - bianco - nero*



40 210 37 38 0,4



- service cabinet
- laminated frame in grey - white - black finish
- laminated doors in grey - white - black finish

Rubino

- *mobile di servizio*
- *struttura laminato grigio - bianco - nero*
- *ante laminato grigio - bianco - nero*



40 210 37 70 0,4



- linking unit for central styling unit
- laminated frame in grey - white - black finish
- laminated doors in grey - white - black finish

Plaza

- *mobile di supporto per postazione lavoro centrale*
- *struttura laminato grigio - bianco - nero*
- *ante laminato grigio - bianco - nero*



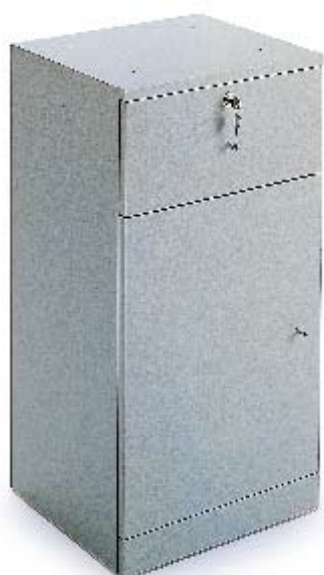
28 210 74 60 0,5



- service cabinet
- grey - Baviera walnut - maple laminated frame
- removable drawer

Box

- mobiletto di servizio
- struttura laminato grigio - noce Baviera - acero
- finiture cassetto estraibile

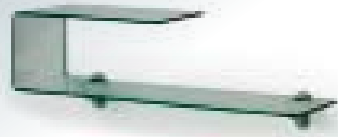


- service cabinet
- structure grey wood
- finishing removable drawer with key, door with compartment for objects

Big Box

- mobiletto di servizio
- struttura legno grey
- finiture cassetto estraibile con chiave, anta con vano portaoggetti





- shelf for objects
- structure transparent glass

Snake

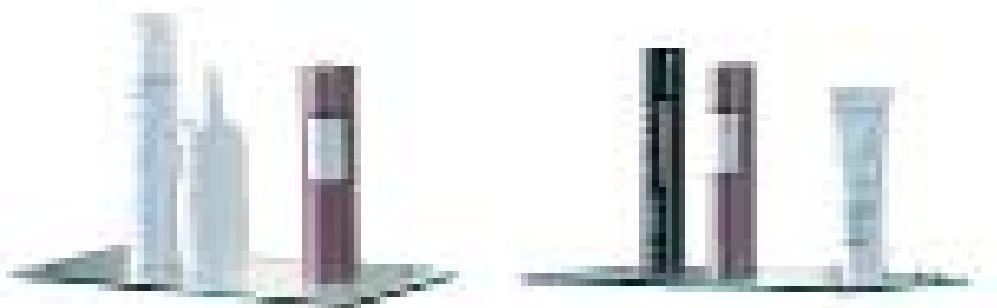
- mensola porta prodotti
- struttura vetro trasparente



- shelf for objects
- structure transparent glass

Gull

- mensola porta prodotti
- struttura vetro trasparente



- two shelves for products display
- clear glass shelf - available sizes 40/80/120 cm
- with assembly kit

Glass-tra

- due piani porta oggetti
- struttura vetro trasparente disponibile 40/80/120 cm
- fornito di kit di montaggio



- service cabinet with sink and water mixer
- laminated frame in grey - white - black finish
- laminated door in grey - white - black finish

Cabin Sink

- mobiletto di servizio con lavandino e miscelatore
- struttura laminato grigio - bianco - nero
- anta laminato grigio - bianco - nero





- service cabinet
- structure 1 door grey laminated bavarian nut wood

Lapis

- mobiletto di servizio
- struttura laminato grigio - bianco - nero
- finiture a 1 ante in laminato grigio - bianco - nero



- service cabinet
- laminated frame in grey - white - black finish
- 2 laminated doors in grey - white - black finish

Agata

- mobiletto di servizio
- struttura laminato grigio - bianco - nero
- finiture a 2 ante in laminato grigio - bianco - nero



- service cabinet
- laminated frame in grey - white - black finish
- 3 laminated doors in grey - white - black finish

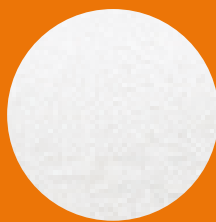
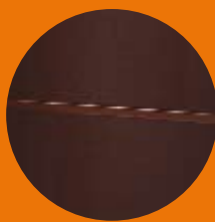
Corallo

- mobiletto di servizio
- struttura laminato grigio - bianco - nero
- finiture a 3 ante in laminato grigio - bianco - nero

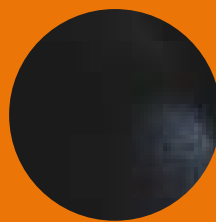




tiles
pavimenti-rivestimenti
iris format



colors - colori
skay white - bianco



colors - colori
skay black - nero





working chair - **venezia** - poltrona lavoro
wash unit - **logic venezia** - lavaggio
styling unit - **billy** - mensola
waiting chair - **dada** - poltrona attesa
panel - **jaqueline** - pannello

FruitStyle

Accessories and stools - Accessori e sgabelli

 **beauty star**



- o stool
- o base chromed metal with
- o wheels with gas pump

Bon Bon

- o sgabello
- o base metallo cromato con
- o ruote con pompa a gas



60 87 60 8 0,26



- o stool
- o base chromed metal
- o with wheels with gas pump

Rugby

- o sgabello
- o base metallo cromato con ruote
- o con pompa a gas





- o stool
- o base chromed metal with
- o wheels with gas pump
- o covering skay

Sissi

- o sgabello
- o base metallo cromato
- o con ruote con pompa a gas
- o rivestimento skay

↑	↑	↘	kg	m ³
87	61,5	60	8,5	0,1
max	min			

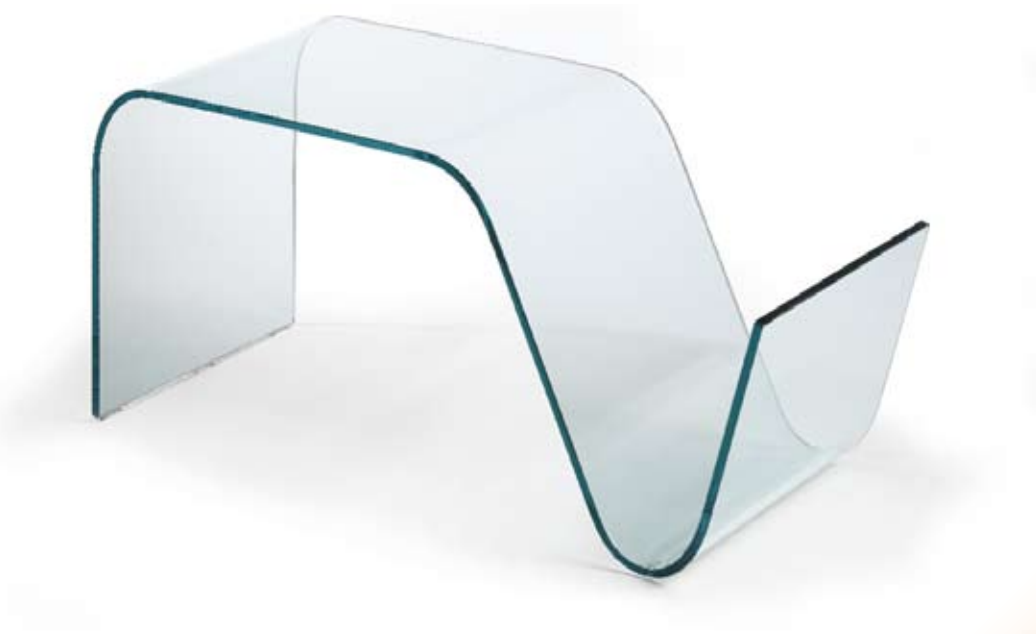


- o reception desk stool
- o base chromed metal
- o covering skay

Sofà

- o sgabello retrocassa
- o base metallo cromato
- o rivestimento skay

↔	↑	↘	kg	m ³
50	103	60	8	0,26



- transparent glass waiting table with magazine rack

Panorama

- tavolino attesa in vetro trasparente portariviste



65 40 40 18 0,1



- sterilizer for scissor and irons
- structure plastic
- colour white
- volt 120/hertz 50

Steril 80

- sterilizzatore per forbici e ferri
- struttura plastica
- colore bianco
- volt 120/hertz 50

31,5 13,5 19,5 7 0,02



- wet towels heater (45°C) with germicide lamp
- colour white

Germi Hot Caby

- scaldasalviette a 45°C con lampada germicida
- per salviette calde-umide a 220 volt

47 35 37 16 0,1



- professional trolley
- structure grey or black plastic
- top professional trolley
- finishing 6 removable drawers
- turning castors

Carrello Classic

- carrello di servizio
- struttura plastica grey o black
- piano attrezzato portaoggetti
- finiture 6 cassette estraibili
- ruote girevoli

40 84 40 10 0,18



AGYO

Ergonomic Neck Support



- o guarantees Comfort&Relax when washing
- o eliminates tension in the neck
- o eliminates the "cold" effect from contact when washing
- o guarantees hygiene and practical use
- o antibacterial highly-deformable silicone rubber

Agyo design by Robert Thompson for Platform

- o garantisce igiene e praticità d'uso
- o garantisce Comfort&Relax durante il lavaggio
- o elimina tensioni nel collo
- o elimina l'effetto "freddo" del contatto con il lavaggio
- o gomma silconica antibatterica ad alta deformabilità



arjers





- electronic hairdryer with double hood silver
- volt 220/240
- watt 1000
- hertz 50/60

Cheope

- casco elettronico a completa regolazione digitale
- con doppia campana grigio silver
- volt 220/240
- watt 1000
- hertz 50/60



36 180 35 9 0,3



- dryer hood
- finishing silver painted metal base with wheels and chromed metal pedestal
- colour silver - black
- volt 220/240
- watt 1000
- hertz 50/60

Hair station con piede

- casco per asciugatura
- finiture base in metallo verniciato silver con ruote e tubo in metallo cromato telescopico
- colore argento - nero
- volt 220/240
- watt 1000
- hertz 50/60





- ionic dryer hood
- finishing silver painted metal base with wheels and chromed metal pedestal
- colour silver - black
- volt 220/240
- watt 1000
- hertz 50/60

Ionic Hair station con piede

- casco per asciugatura con ionizzatore
- finiture base in metallo verniciato silver con ruote e tubo in metallo cromato telescopico
- colore argento - nero
- volt 220/240
- watt 1000
- hertz 50/60



32 130 35 35 0,15



- hairdryer with direct ventilation 2 speeds
- colour silver - white - black
- finishing telescopic wall arm
- volt 220/240
- watt 1000
- hertz 50/60

New Aries muro

- casco ABS con ventilazione diretta a due velocità
- finiture braccio telescopico a muro
- colore silver - bianco - nero
- volt 220/240
- watt 1000
- hertz 50/60

↑	↑	kg	m³
200	240	14	0,35
min	max		



- hairdryer with direct ventilation 2 speeds
- colour silver - white - black
- volt 220/240
- watt 1000
- hertz 50/60

New Aries piede

- casco ABS con ventilazione diretta a due velocità
- colore silver - bianco - nero
- volt 220/240
- watt 1000
- hertz 50/60

→	↑	kg	m³
36	180	35	9
			0,3



- hairdryer diffuse steam
- finishing adjustable caster base
- colour silver
- volt 220/240

Vaporizzatore a piede con ozono

- casco per asciugatura a vapore diffuso
- finitura base ruote regolabile
- colore silver
- volt 220/240





- hair drying headset
- various programs with electronic selection
- ionizer function
- colours black and grey
- volt 240/110
- watt 1000
- hertz 50/60

Casco Konus

- casco per asciugacapelli a doppia campana
- vari programmi di asciugatura selezionabili elettronicamente
- funzione ionizzatore
- colore nero e grigio
- volt 240/110
- watt 1000
- hertz 50/60





- hairdryer with analogical regulation
- double bell ventilation
- colours grey/white/black
- base with wheels
- telescopic chromium-plated metal tube

Casco Babylon

- casco con ventilazione a doppia campana, regolazione analogica
- colore grigio, bianco, nero
- base con ruote
- tubo metallo cromato telescopico



55 125 180 55 15 0,20



- hairdryer with digital regulation
- direct ventilation
- colours grey/white/black
- base with wheels
- telescopic chromium-plated metal tube

Casco Leo

- casco con ventilazione diretta, elettronico a regolazione digitale
- colore grigio, bianco, nero
- base con ruote
- tubo metallo cromato telescopico



55 125 180 55 15 0,20



Salone Alkimia

Cuorgné (TO)



Salone Haniel

Via della Spiga - Milano



Salone Karisma

Lodi (MI)



Salone Alberto e Giusy

Sergnano (CR)



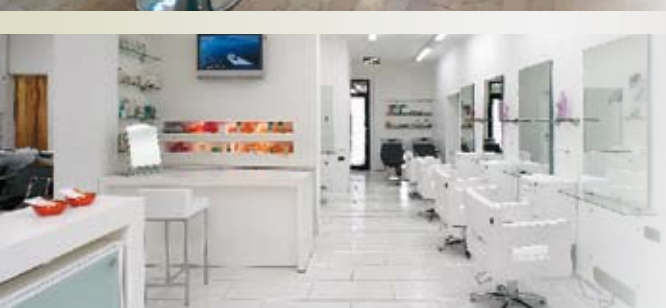
Salone Gate

Reggio Emilia



Salone Loft

Treviso



Salone Fodras

Santa Croce sull'Arno (PI)

192

194

196

198

200

202

204

SALON
Concepts































ENGLISH

1 – Definitions

The Customer: the individual or entity carrying out its own business, commercial, trade or professional activities, who directly or through an intermediary purchases the Products sold by A.A.M. **A.A.M.:** A.A.M. Srl., with registered offices Via dell'Industria 7, 42019 Scandiano (RE) - Italy, who sells the Products. **Order confirmation:** written confirmation of the ordered Product, sent to the Customer by A.A.M. **Price:** the price shown in the Order Confirmation. **Product(s):** that/those shown in the Order Confirmation. **Contract:** the contract signed between A.A.M. and the Customer through the exchange of Order and Order Confirmation, governed by these general sales and warranty conditions.

2 – Validity

This contract applies to this and any further sales between A.A.M. and the Customer, without prejudice to the signature of other, different sales and warranty conditions. By sending an order, the Customer implicitly accepts the Contract.

3 – Orders

Orders are accepted in writing (including e-mail and fax) and are binding for A.A.M. and between the parties when A.A.M. sends the Order Confirmation to the Customer. The Order Confirmation must be checked immediately by the Customer, who shall notify A.A.M. in writing by return in the event of any error being found. Failing this, after three days the contents of the Order Confirmation shall be deemed to be subject to the Contract.

Orders will not be accepted unless accompanied by these general sales and warranty conditions, signed by the Customer. Any further orders accepted and confirmed by A.A.M. by an Order Confirmation shall be deemed to be subject to this Contract.

4 – Price and payment terms

A.A.M. quotations are valid only when in writing and for the period indicated therein. The Price includes solely the goods and services listed and is exclusive of VAT. Payments shall be made in compliance with the terms laid down in the Order Confirmation. A.A.M. may suspend the delivery or execution of the Order until payment has been received, in the case of advance payment, or in the event of delayed payments by the Customer relative to any other previous transaction. The Customer hereby waives all claims for compensation between the amounts due to A.A.M. and any other amounts which may be or which are claimed to be due to them, for any reason whatsoever, even if due and payable, and even where not contested and legally payable. In the event of delayed payment, the Customer shall pay all interests due on the owed amount pursuant to Italian law no. 231/2002, as well as all costs for the recovery thereof, without any formal notification of arrears.

5 – Delivery / Ownership / Risk

The delivery terms indicated in the Order Confirmation are purely indicative. Partial deliveries are permitted. The place of delivery is indicated in the Order Confirmation. Product ownership will be transferred only upon payment of the full Price. Without prejudice to article 1525 of the Italian Civil Code, A.A.M. may (with no liability towards the Customer) recover the Product. A.A.M. may take legal action to obtain the Price even before the transfer of ownership. Should the Customer refuse delivery without the prior agreement of A.A.M., all costs or losses borne by A.A.M. as a result of such refusal, including the costs of storage until the time of acceptance of the delivery, shall be for the Customer's account.

6 – Acceptance

On delivery of the Product, the Customer shall check and inspect it, and may reject it or report any defects within a period of no more than eight days from the date of delivery. After such time the Product shall be deemed to be accepted by the Customer. If at its own discretion A.A.M. agrees to the return of the Product, the Product shall be returned in its original conditions, with relative packaging, with a returned goods note and proof of purchase; the costs of the return shall be paid by the Customer.

7 – Responsibility

In the event of the Products not working or malfunctioning, A.A.M. shall in no way be held responsible for any direct or indirect damages or consequential losses, through the loss of business, profit, salaries, commission, savings, without prejudice to the statutory guarantees and any other provisions of these general conditions. Equally, A.A.M. shall not be held responsible for damage caused during the installation of the Products to floors, furniture, ornaments, furnishings and any other items in the place of installation, recognising the contractual obligation of the Customer to protect and/or move such items prior to installation. The Customer acknowledges the instructions provided by A.A.M. in advance concerning the interventions required for the installation of the Products, in particular the relative methods and characteristics.

8 – Force Majeure

A.A.M. shall not be responsible for any delay in the execution of its duties (including delayed delivery) if such delay is caused by circumstances beyond its reasonable control, and shall have the right to benefit from an extension to the execution times; examples of force majeure include strikes, problems in supply/transport/production, variation of exchange rates, government action and legislation, natural calamities. If the force majeure continues for a period of more than 2 months, both Parties have the right to withdraw from the Contract, without any compensation being due to the other Party.

9 - Protection of Personal Data

The personal data of the Customer shall be processed, stored and/or notified in compliance with the law, and the Customer hereby provides its consent pursuant to and under the terms of the applicable privacy and data protection regulations. The Customer may exercise all rights of access, correction, deletion and suspension of the processing of its data by so requesting A.A.M. in writing. The Customer may oblige A.A.M. not to use its data for marketing purposes.

10 – Warranty**10.1 Extent**

This warranty is granted to Customers operating within their professional activities, as defined in Article 1. The sales to which these general conditions apply relate to Products not destined for consumers, as identified in Article 3 of Italian Legislative Decree 206/2005. The warranty covers Product defects, understood as material imperfections, which have a significant impact on its usability or value, relative to anomalies of production, manufacturing, preparation and storage, and is valid within the limits and under the conditions laid down here below.

10.2 Duration

A.A.M. warrants the Products for a period of one year from the delivery date.

10.3 Application

Without prejudice to the explanations, exclusions or limitations described here below, or in any case referred to in this contract, the warranty shall apply to Product defects as identified according to the definition in Article 1490, para. 1 of the Italian Civil Code.

10.4 Methods, terms and forfeiture of the right to warranty

On discovery of any defect, the Customer shall send written notice to A.A.M., attaching a copy of the sales invoice and the relative Order Confirmation, and indicating the serial number of the faulty product. The notice must be sent to A.A.M. in writing within eight days from the discovery of the defect, under penalty of invalidation of the warranty. The right of warranty expires in one year. Any intervention on the faulty product by the Customer or by a third party unless otherwise authorised by A.A.M. in writing, shall lead to the invalidation of the warranty.

10.5 Exclusions and limitations

Without prejudice to any other provisions, the warranty shall not be valid if the defect is caused or worsened by improper use of the Product by the Customer or third parties, or by maintenance which does not comply with the manufacturer's instructions, or by interventions of any nature, including maintenance, which have not been carried out on the Product or which have not been authorised by A.A.M.

The warranty shall also be excluded:

- if the required documents are not attached to the defect notice and if the information laid down in article 10.4. is not provided;
- if the Products have been installed, preserved or store in conditions that are not suited to assure their quality (outside, in a damp area, in a poorly aired room, etc.);
- if the Products have not been installed correctly, or have been tampered with, have had parts or components added which are not original or not authorised by A.A.M., or cleaned using procedures or products that may have damaged them;
- in the event of damage which is not derived from original production faults and/or the poor quality of the materials used, but which are rather the consequence of events or accidental damage to the product including, but not limited to: knocks, dents, scratches, cuts, stains caused by external factors such as dyes, lacquers or cleaning products;
- damages caused by wear following the normal use of the Products;
- if the products are not used by the parties they are destined for and for which they are produced, in other words hairdressers, beauty salons, beauty farms.

10.6 Special Warranty Conditions

The following special warranty conditions apply to the components and materials described below:

Pomps of the bases:

two years are guaranteed by the date of delivery.

Artificial leather:

Especially white and all light colours, the warranty does not cover damage which is not derived from original production faults and/or the poor quality of the materials used, but which are rather the consequence of events or accidental damage to the product including, but not limited to: knocks, scratches, cuts, stains caused by external factors such as dyes, lacquers or cleaning products, denim fabric. Any difference in colour shade between articles or products with the same kind of artificial leather shall not be considered to be original defects.

Painted parts:

The warranty does not cover damage which is not derived from original production faults and/or the poor quality of the materials used, but which are rather the consequence of events or accidental damage to the product including, but not limited to: knocks, dents, scratches, cuts, stains caused by external factors such as dyes, lacquers or cleaning products. Any difference in colour shade between articles or products with the same kind of paint shall not be considered to be original defects.

Aluminium parts:

The warranty does not cover damage which is not derived from original production faults and/or the poor quality of the materials used, but which are rather the consequence of events or accidental damage to the product including, but not limited to: knocks, dents, scratches, cuts, stains caused by external factors such as dyes, lacquers or cleaning products. Any difference in colour shade between articles or products with the same kind of aluminium parts shall not be considered to be original defects.

Electrical parts and electrical equipment [excluding neon lamps, leds and light bulbs]

These fall under the normal warranty conditions unless damage is caused by power surges which exceed the limits laid down in CE regulations (220/240 V, 50hz, +/- 10%).

Neon lights, leds and light bulbs:

These consumable items are not covered by the general warranty conditions.

Exclusively guaranteed at the time of delivery are the colour temperature and colour yield parameters indicated in the specifications of the most important producers (I.E. Philips catalogue paragraph 12). The Customer is therefore bound to immediately check the components to which this paragraph refers, and in the event of discovery of any defects in these specifications, must send written notice to A.A.M. no later than 8 days from the receipt of the goods; failure to do so will invalidate the Customer's warranty rights for these components.

Excluded from the warranty conditions is the normal wear of the products due to use, and the Customer hereby acknowledges, waiving all claims thereto, that over time neon lights, leds and light bulbs may present colour defects or stop working.

Glass and mirrors:

The warranty does not cover damage which is not derived from original production faults and/or the poor quality of the materials used, but which are rather the consequence of events or accidental damage to the product including, but not limited to: knocks, dents, scratches, cuts, stains caused by external factors such as dyes, lacquers or cleaning products.

Basins:

The warranty does not cover damage which is not derived from original production faults and/or the poor quality of the materials used, but which are rather the consequence of events or accidental damage to the product including, but not limited to: knocks, dents, tears, chips, scratches, cuts, stains caused by external factors such as dyes, lacquers or cleaning products.

Taps, shower heads and flexible hoses:

Taps are guaranteed for 5 years, shower heads and flexible hoses for 6 months.

10.7 Intervention by A.A.M.

A.A.M. will examine the Product and, at its own unquestionable discretion, will decide whether the problem falls within the coverage of the commercial warranty. Following the examination of the product, through its own technical service, or through authorised assistance partners, A.A.M. will take care of the replacement or repair of parts proved to be faulty from the origin, that will be returned ex-works. If the shipment of spare parts is required, transport costs and risks are at charge of the buyer. In any case, working hours and any damage that might have occurred to the buyer are not covered by the guarantee. Any replaced parts will become the property of A.A.M.. If an item is no longer sold by A.A.M., it will be replaced with an appropriate alternative. At its exclusive discretion, A.A.M. will establish what is considered to be an appropriate alternative.

10.8 Exclusion of implicit recognition of defects

With reference to article 1495, para. 2 of the Italian Civil Code, any intervention by A.A.M., or a party appointed or authorised by it, shall not imply the recognition of any defects, but rather aims exclusively to assess the claim reported by the Customer. The intervention by A.A.M., or a party appointed or authorised by them, to repair or replace products shall equally imply no recognition of defect, but shall rather be carried out solely for the purpose of avoiding disputes and/or for contractual purposes. Defects will be deemed to be recognised according to the law solely when so explicitly declared in writing.

11 – Assistance not covered by warranty

In the event of a customer requesting assistance for products supplied by A.A.M. which are not covered by a valid warranty, the Customer will be charged all costs and accessory charges borne by A.A.M. for spare parts, labour, travel costs, board and lodging required to carry out the assistance.

12 – Jurisdiction

This contract is governed by Italian law, and all matters shall be referred to the exclusive jurisdiction of the courts of Reggio Emilia.

13 – Final clauses

The Italian text of the present contract shall be the only authentic text.

Pursuant to and under the terms of articles 1341 and 1342 of the Italian Civil Code, the Customer hereby declares that he has read and expressly approves the following articles of the A.A.M. Srl. General Sales and Warranty Conditions: art. 2 (validity), art. 3 (orders), art. 4 (price and payment terms), art.5 (delivery/ownership/risk), art. 6 (acceptance), art.7 (responsibility), art. 8 (force majeure), art. 10 (warranty, paragraphs: 10.1, 10.2, 10.3, 10.4, 10.5, 10.6, 10.7, 10.8), art. 12 (jurisdiction), art. 13 (final clauses).

A hand-drawn illustration of a smiling face, rendered in a sketchy, artistic style. The face is composed of various brushstrokes in shades of grey, pink, yellow, and green. The eyes are simple grey ovals, and the mouth is a wide, open smile. The background is a light grey gradient with a large, faint circular shape behind the face.

 **beauty star**[®]



Credits

Concept, design, styling

by Davalle&Partners - Ravenna

Photo

by Fotografia Gamma - Scandiano (RE)

by Studio Leon - Pesaro

Print

by Ruggeri Grafiche - Modena

Special Thanks

UKI Hairdresser Accessories

Iris Ceramica

Targetti

Ceramica Gatti

Mirta Morigi Ceramica Contemporanea

[I] Tessuti spalmati di P.V.C. espanso espressamente studiati per il rivestimento di poltrone e divani per la collettività: alberghi, ristoranti, uffici, sale da spettacolo, negozi per parrucchieri e centri estetici

Lo Skay Giusto al Posto Giusto. Per poltrone da lavoro e lavaggi raccomandiamo la scelta di skay scuri. La scelta di uno skay chiaro è più indicata per poltrone e divanetti da attesa. Scegliere uno skay chiaro per poltrone lavoro e lavaggio comporta un maggior rischio di macchiatura e di conseguenza una più frequente pulizia delle superfici con prodotti adeguati

Modalità di lavaggio:

Sapone neutro e una spugna sono gli strumenti di pulizia più adatti per un trattamento efficace. Sono ASSOLUTAMENTE VIETATI solventi, candeggina, detergenti chimici e smacchiatori

Norme di Ignifugazione:

Italia classe M1-M2 - Francia classe M1-M2 - Germania classe DIN.A4 102B2 - Regno Unito classe BS5852 parte 2

[GB] Vinyls spread of expanded p.V.C. Expressly studied to cover chairs and sofas for the collectivity: hotels, restaurants, offices, performances, hairdressers and aesthetics centres. The right vinyl at the right place. For working chairs and washunits we suggest the choice of dark vinyls. The choice of a light vinyl is more appropriate for waiting chairs and sofas. Choosing a light vinyl for working chairs and washunits involves a major risk of getting stained and the necessity of a more frequent cleaning of the surfaces with suitable products.

Washing instructions:

Please clean only with a soft cloth drenched with neutral detergent and rinse with water. For every kind of vinyl and whatever kind of spot maybe, do not ever use solvents, chlorides, very strong chemical detergents and polishing spray.

Antifire rules:

Italia class m1-m2 - France class m1-m2 - Germany class din.A4 102b - Uk class bs5852 part 2

[F] Tissus tendus du P.V.C. evase etudie expres pour le revetement de fauteuils et divans pour la collectivité: hotels, restaurants, bureaux, salles de spectacle, coiffeurs et centres d'esthetique. Le sky juste au bon endroit.

Pour fauteuils de travail et de bac de lavage nous vous suggerons de choisir coloris foncé. La choix d'un coloris clair c'est mieux conseillée pour fauteuils et divans d'attente. La choix d'un coloris clair pour fauteuils de travail et de bac de lavage comporte un plus grand risque de taches et, par consequent, un plus frequent nettoyage des surfaces avec des produits appropriées.

Instruction de lavage:

Les instruments de nettoyage plus indiqués pour un traitement efficace sont le savon neutre et une eponge. Solvants, eau de javel, detergents chimiques et detachants sont absolument interdits.

Normes contre l'incendie:

Italie classe m1-m2 - France classe m1-m2 - Allemagne classe din.A4 102b2 - Angleterre classe bs5852 parte 2

[D] Beschreibung: gewebe, die mit p.V.C. Gestrichen sind; sie wurden eigens für die verkleidung von sessel und sofa von gemeinschaft vorbereitet: hotel, restaurants, büro, vorstellungsräume, geschäfte für friseure und beauty center. Der richtige skai im richtigen platz. Für drehsessel und waschanlage empfehlen wir die wahl von dunkle skai bezüge. Dagegen empfehlen wir helle skai bezüge für wartesessel und wartecouch. Die wahl von helle skai bezüge auf drehsesek und waschanlage verfangt nämlich ein höheres risiko von flecken und, als konsequenz, häufige waschungen der oberfläche mit ungeeignete produkte.

Waschung:

Die geeignete produkte für eine wirkungsvolle behandlung sind neutrale seife und einer sch-wamm. Die benutzung von folgende produkte ist völlig verboten: lösungsmitteln bleichmittel, chemische reinigungsmittel, fleckmittel.

Feuerhemmendemachenvorschriften:

Italien klasse m1-m2 - Frankreich klasse m1-m2 - Deutschland klasse din.A4 102b2 - Vereinigtes königsreich großbritannien und nordirland klasse bs5852 parte 2

COMPOSIZIONE / COMPOSITION / COMPOSITION / ZUSAMMENSETZUNG

Superficie Surface Surface Oberfläche	Poliammide Polyamide Polyamide 100% Polyamid	Tessuto base Base fabric Fabrique base Grundgewebe	Polietilene Polyethylene Polyéthylène Pol Yathylen	37% cotone 37% cotton 37% coton 37% baumwolle	19,90% poliammide 19,90% nylon 19,90% polyamide 19,90% polyamid	12,25% resina ac. 25,85% 12,25% resina ac. 25,85% 12,25% résine ac. 25,85% 12,25% aKrylharz 25,85%
--	---	---	---	--	--	---

Altezza Largeur	Width breite	140 cm.	Peso / weight Poids [ml.] gewicht [gr./mq.]	232
--------------------	-----------------	---------	---	-----

Resistenza allo strappo/Ripping strenght Résistance à la déchirure/Rissfestigkeit	Ordito / Warp Chàine / Kette	+25	Trama / Weft Trame / Schuss	+27	[BS4303]
--	---------------------------------	-----	--------------------------------	-----	----------

Resistenza alla trazione Breaking strenght Résistance à la traction Zugbeständigkeit	Ordito / Warp Chàine / Kette	+550N	Trama / Weft Trame / Schuss	+600N	[BS2576]
---	---------------------------------	-------	--------------------------------	-------	----------

Solidità sfregamento Rubbing fastness Résistance au frottement Beständig gegen Reibung	a secco Dry En sec Trocken [chemisch]	4 a 5	umido Wet En humidité Feucht	4 a 5	[UNE 40 029]
---	--	-------	---------------------------------------	-------	--------------

Resistenza all'abrasione Abrasion resistance Résistance à la chalaour Beständig gegen die Abrieb	25.000 giri	SD/PS/SD/P. Martindale
---	-------------	------------------------

Solidità alla luce/Light fastness/Résistance à la lumière/Lichtbestanding	4/6	[BS 1006]
---	-----	-----------

Resistenza la pilling/Pilling resist. Résist. au pilling/Bestanding gegen pilling	5 min.=5 15 min.=7	30 min.=7	[NFG 07121]
--	--------------------	-----------	-------------

Resistenza cucitura Seam slipping Déplacement de la couture Verschiebung der Naht	Ordito / Warp Chàine / Kette	192N	Trama / Weft Trame / Schuss	200N	[BS 33 20]
--	---------------------------------	------	--------------------------------	------	------------

NORME DI LAVAGGIO / WASHING NORMS / NORME DE LAVAGE / WASCHANWEISUNGEN

In macchina massimo 40° C
Laundry, 104 F maximum
En machine, max 40° C
In der Waschmaschine bei 40° C



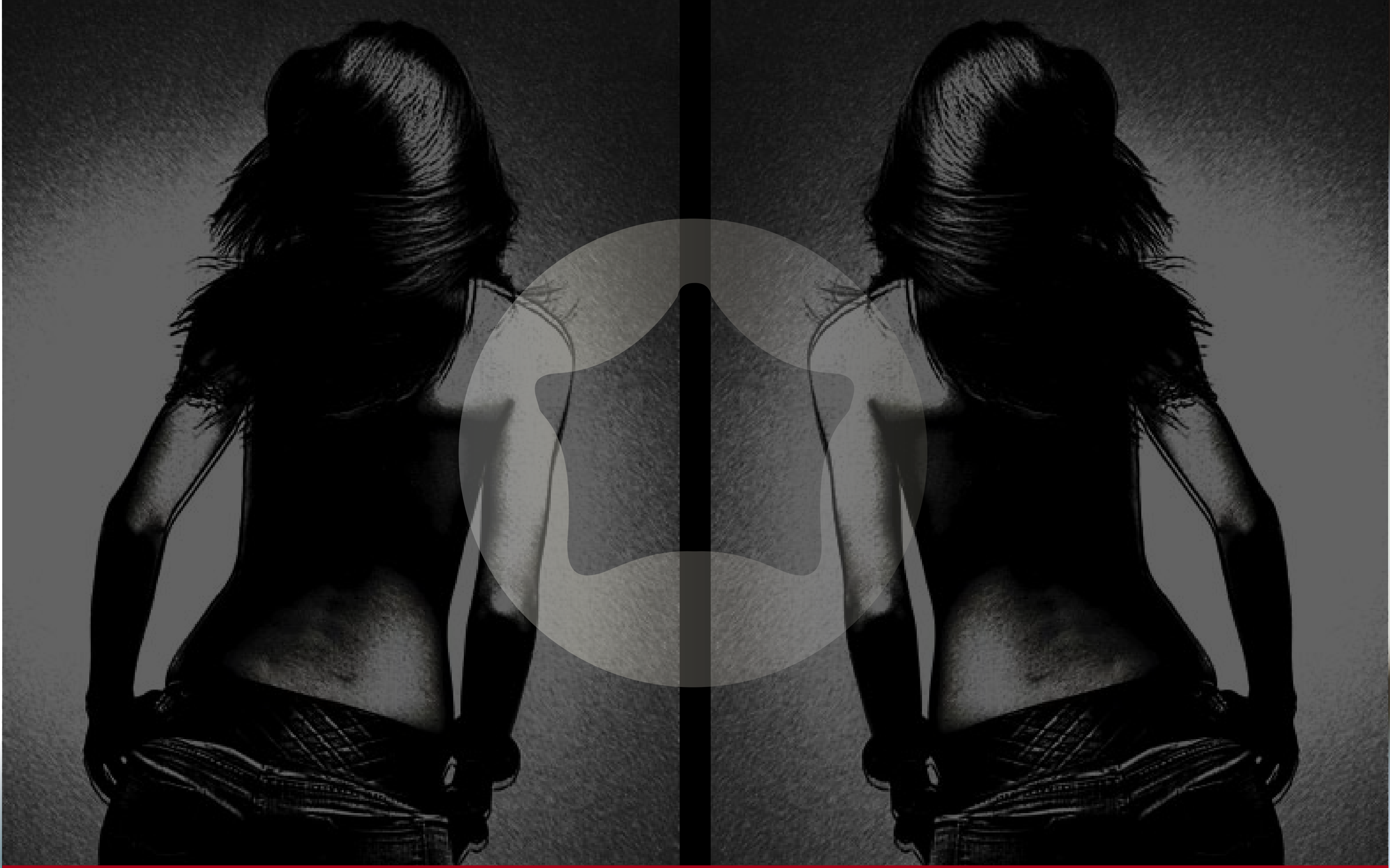
Strirare sul rovescio del tessuto massimo 100° C
Iron by the reverse side, 212 F max. [brush softly]
Répasser sur l'envers du tissu, max 100° [brosser doucement]
Auf der Rückseite mit 100°C. bügeln [leicht ausbürsten]

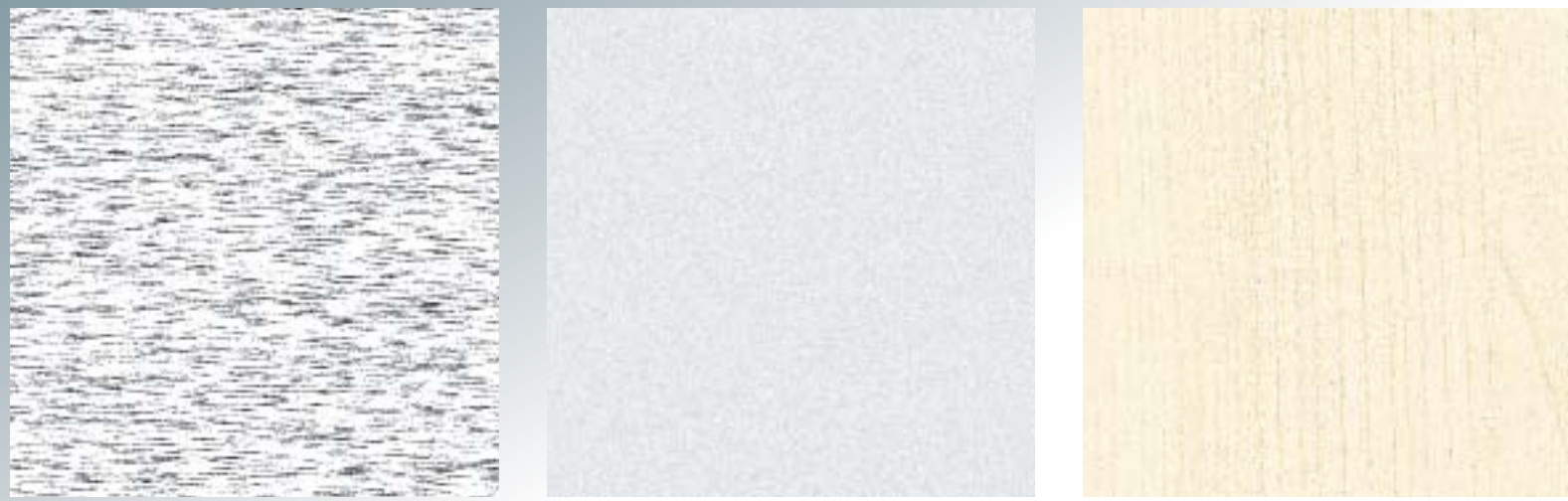


Usare unicamente detergente neutro
Neuter detergent only
Uniquement détergent neutre
Nur neutrale Waschmittel benutzen

Lavaggio a secco
Could be washed in dry
Nettoyage a sec permis
Kann chemisch gereinigt werden

Non candeggiare
Do not use bleach
Javel interdite
Keine Lauge verwenden





873

Grey Silver - Grigio Argento

Maple - Acero



White - Bianco

Cedar - Cedro

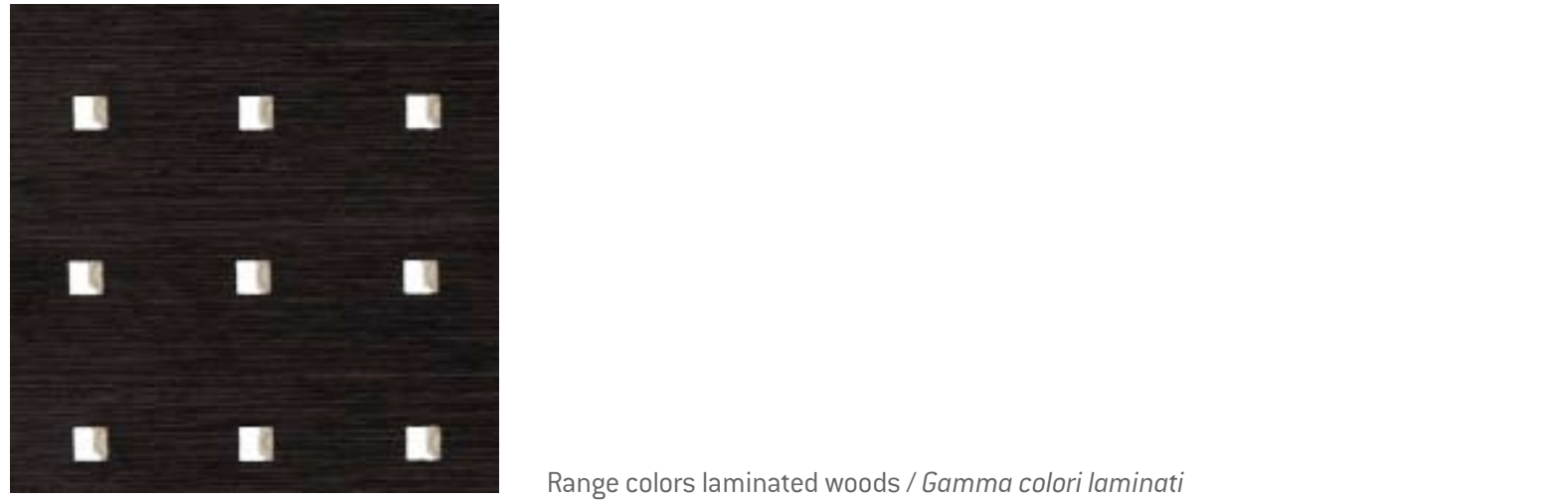
Black - Nero



Bavarian Walnut Wood - Noce Baviera

Wenge - Wengé

Silver/Silver - Argento/Argento



Wenge/Silver - Wengé/Argento

Range colors laminated woods / *Gamma colori laminati*



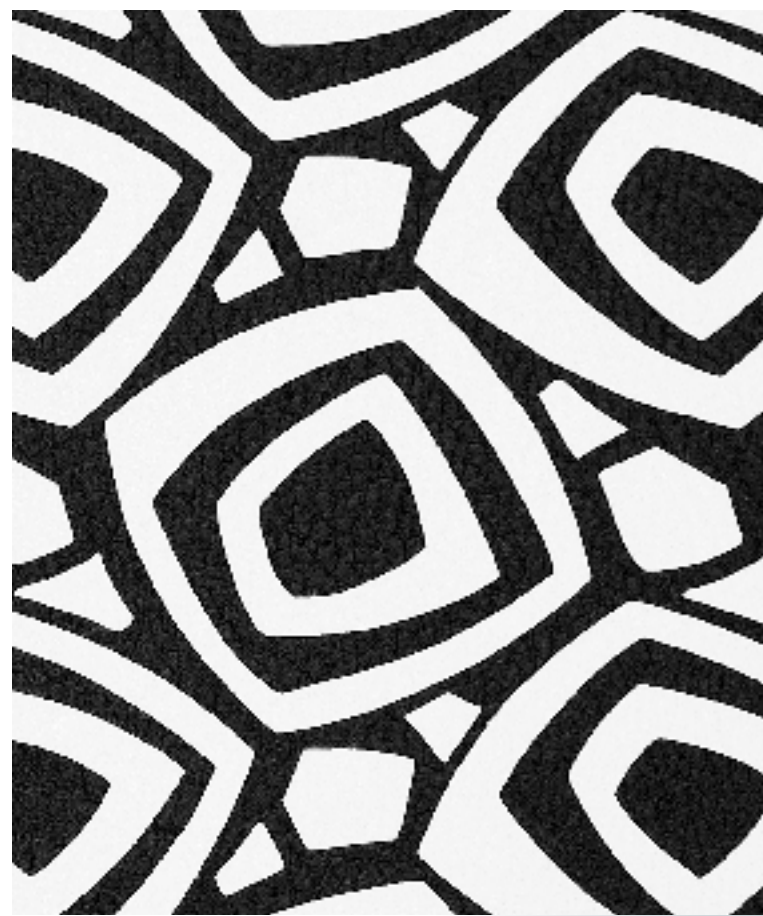
325 White Black/326 White White



327 White Black/328 White White



329 White Black/330 White White



331 White White/332 White Black

Range colors optical skay / *Gamma colori skay optical*



166

161

187

169

188

158



189

181

190

191

192

193



194

195

196

197

179

198



199

302

303

304

305

306



307

308

309

310

311

312



313

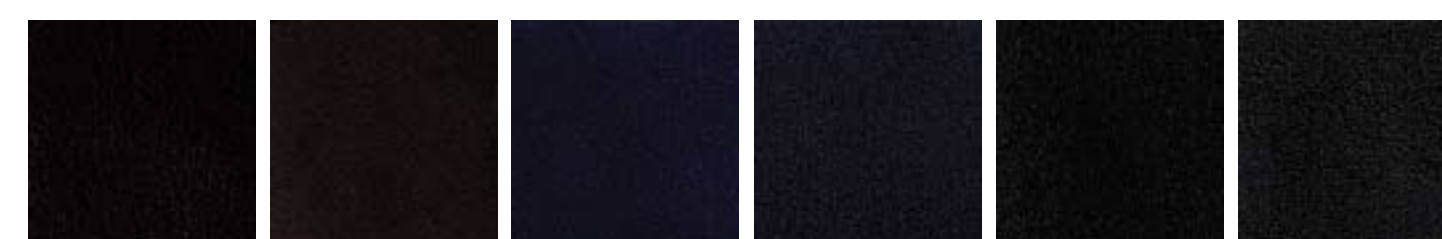
314

315

165

316

48



09

154

317

318

12

170

Range colors standard skay / *Gamma colori skay standard*



319

21

153

177

152

37



320

321

322

323

324

355



333

334

335

336

337

338



339

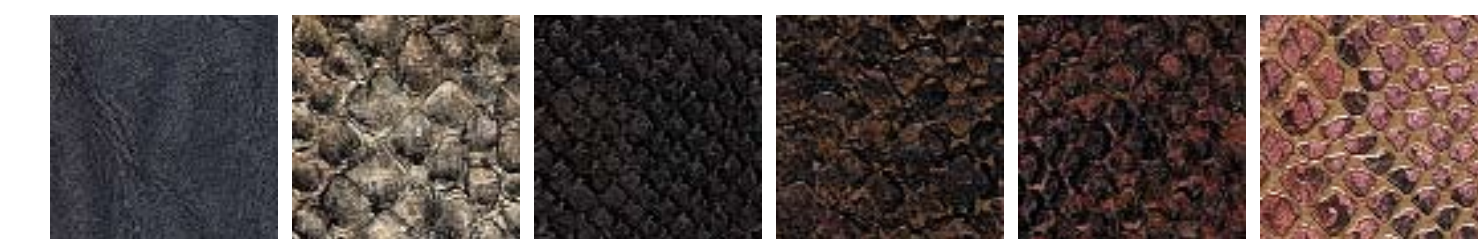
345

340

341

342

343



344

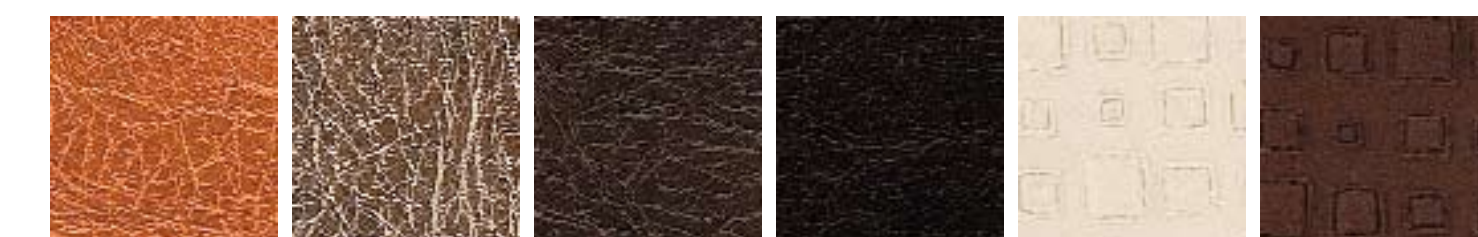
346

347

348

349

350



351

352

353

354

356

357



358

359

360

361

Range colors luxury skay / *Gamma colori skay luxury*





beauty star®

beautiful_young_glamour
bella_giovane_glamour

Beauty Star a.a.m. s.r.l.

Via dell'Industria, 7

Bosco di Scandiano (RE) - Italy

ph +39 0522 855747

fax +39 0522 983677

www.beautystar.com

beautystar@beautystar.com

Azienda Certificata UNI EN ISO 9001:2000 Cert. N° 191/05